

2023 TOWNSHIP MAP & INFORMATION GUIDE



Limerick Township

MONTGOMERY COUNTY, PENNSYLVANIA

646 W. Ridge Pike • Limerick, PA 19468 • 610-495-6432 • www.limerickpa.org

ABOUT THIS MAP AND GUIDE

A Message from the Board of Supervisors

Dear Residents and Friends of Limerick Township,

The Board of Supervisors is pleased to provide you with this map of our wonderful community. Founded in 1726, our Township has been home to generations; mixing life-long residents and transplants from far and near. Combined with our business community, our residents make Limerick a great place to call home.

This Community Map provides information about basic organizational and administrative structure of our community. Its intent is to outline the history and recreational opportunities, and provide other insight into our fine community.

We encourage the reader to review and understand this information as a visitor, neighbor, resident, or business owner. Your involvement in activities and attendance at Township meetings and Special Community Events is greatly encouraged. Our community, like many others, depends on volunteers that serve on Township Committees, Boards, and Commissions, and we encourage those who wish to serve to step forward and offer their time and talents.

Thank you to the businesses which appear on the map; their sponsorship has paid for this publication and ask that you support and utilize their services.

Board of Supervisors,
Linda Irwin
Michael J. McCloskey, III
Patrick M. Morroney
Kara Shuler
Kenneth W. Sperring, Jr.

About Limerick Township

Limerick Township was incorporated in 1726 and is the second largest municipality (22.6+ square miles) in Montgomery County. The current population, according to the 2020 Census, is 20,458.

Limerick Township is home to major employment centers such as: Linfield Industrial Park, Heritage Field Airport, Exelon's Limerick Generating Station, Philadelphia Premium Outlets, and many other commercial and industrial businesses. It is accessible from three interchanges of PA State Route 422 and is situated between Philadelphia and Reading. Philadelphia International, Reading Municipal, and Lehigh Valley International Airports are all within an hour's driving distance. Shopping is easy and convenient. Restaurants and places of worship abound within the Township as well as in surrounding areas.

Limerick Township is an emerging community that provides housing for all lifestyles and price ranges. It is one of four communities in the Spring-Ford Area School District, which provides excellent educational opportunities for students in kindergarten through twelfth grades.

In addition to four public golf courses and one private golf course, there are five public parks which offer picnic facilities and other accommodations for recreation and relaxation. Limerick Community Park, Kurylo Preserve, Linfield Sports Park, Trinley River Park, and Veterans Park are excellent places for both passive and active recreation.

Limerick Township is a great place to call home!

APPOINTED AND ELECTED OFFICIALS

BOARD OF SUPERVISORS

Linda Irwin	lirwin@limerickpa.org
Michael J. McCloskey, III	mmccloskey@limerickpa.org
Patrick Morroney	pmorroney@limerickpa.org
Kara Shuler	kshuler@limerickpa.org
Kenneth W. Sperring, Jr.	ksperring@limerickpa.org

TOWNSHIP STAFF

Township Manager

Daniel K. Kerr - dkerr@limerickpa.org

Assistant Township Manager/Treasurer

Beth F. DiPrete - bdiprete@limerickpa.org

Chief of Police

Robert J. Matalavage - rjmatalavage@limerickpa.org

*For contact information for the following departments,
please visit our website at www.limerickpa.org:*

Codes Services

Emergency Services

Parks and Recreation

Public Works Superintendent

Planning & Zoning

APPOINTED MUNICIPAL OFFICIALS

Solicitor, John J. Iannozzi, Esq.

Hamburg, Rubin, Mullin, Maxwell & Lupin, PC

Civil Engineer, Khaled R. Hassan, P.E.

Pennoni Associates, Inc.

Traffic Engineer, Joseph P. Platt, P.E.

Traffic Planning and Design, Inc.

Planner, Peter Simone, RLA, FASLA

Simone Collins Landscape Architecture



TOWNSHIP MEETING SCHEDULE

Board of Supervisors

1st and 3rd Tuesday at 7:00PM

Planning Commission

2nd Thursday at 7:00PM

Zoning Hearing Board

4th Wednesday at 6:30PM

Parks and Recreation

2nd Tuesday at 7:00PM

COMMITTEES

Meet on an as-needed basis

- Act 209 - Traffic Impact Advisory Committee
- Agricultural Security Area Committee (ASA)
- Industrial Development Authority (IDA)
- Open Space Committee
- Pension Advisory Committee
- UCC Appeals Board



GOVERNMENT OFFICIALS INFORMATION

FEDERAL GOVERNMENT

Madeleine Dean, U.S. Senator (D)

Washington, D.C. Office
150 Cannon HOB
Washington, D.C. 20515
Phone: (202) 225-4731

Pottstown District Office
1200 E. High Street, Suite 105
Pottstown, PA 19464
Phone: (610) 382-1250

Robert P. Casey, Jr., U.S. Senator (D)

Washington, D.C. Office
393 Russell Senate Office Building
Washington, D.C. 20510
Phone: (202) 224-6324

Philadelphia Office
2000 Market Street, Suite 610
Philadelphia, PA 19102
Phone: (215) 405-9660

John Fetterman, U.S. Senator (D)

Washington, D.C. Office
Dirksen Senate Office Building,
Suite B40B
Washington, D.C. 20510
Phone: (202) 224-4254

Philadelphia Office
200 Chestnut Street, Suite 600
Philadelphia, PA 19106
Phone: (215) 241-1090

STATE GOVERNMENT

Josh Shapiro, Governor (D)

Office of the Governor
508 Main Capitol Building
Harrisburg, PA 17120
Phone: (717) 787-2500

Tracy Pennycuik State Senator (R)

Main Capital Building
Senate Box 203024
Room 16 East Wing
Harrisburg, PA 17120
Phone: (717) 787-3110
Fax: (717) 787-8004

Montgomery County Office

56 West 4th Street
Red Hill, PA 18076
Phone: (610) 831-8830
Fax: (610) 831-8837

Joseph Ciresi State Representative (D)

State Capitol Office
Room 125A, East Wing
PO Box 202146
Harrisburg PA 17120-2146
Phone: (717) 783-4086
Fax: (717) 705-1891

District Office
Park Towne Plaza
301 N. Lewis Road
Royersford, PA 19468
Phone: (484) 200-8265
Fax: (484) 200-8275

MONTGOMERY COUNTY GOVERNMENT

Commissioners

P.O. Box 311
Norristown, PA 19404
Phone: (610) 278-3000

Board of Assessments - (610) 278-3761
Courthouse - (610) 278-3224
Chamber of Commerce - (610) 265-1776
Health Department - (610) 278-5117
Planning Commission - (610) 278-3722
Voter Services - (610) 278-3280

LOCAL GOVERNMENT LIMERICK TOWNSHIP

Ryan P. Wall Elected Township Tax Collector

646 W. Ridge Pike
Limerick, PA 19468
limericktaxcollector@yahoo.com
Phone: (484) 938-8001

Berkheimer Associates Appointed Tax Collector

www.hab-inc.com
(610) 588-0965

LIMERICK TOWNSHIP POLICE DEPARTMENT

The Limerick Township Police Department was founded in May of 1965 when the Board of Supervisors appointed 6 part-time officers to patrol the Township's 22.6 square miles between the hours of 7:00 A.M. and 1:00 A.M. Tuesday through Saturday.

Today the Department has a \$5.8 million operating budget with 30 full-time officers and 4 civilian employees. The members apply the Department's core values of Honor, Integrity, and Professionalism to provide contemporary police services to the Township's residential and business communities.



The foundation of the Police Department is led by a Patrol Lieutenant overseeing a command of 4 patrol platoons. Those platoons are led by a Patrol Sergeant overseeing a Patrol Corporal and 3 Patrol Officers. These members work 12 hour rotating shifts consisting of two weeks of day work followed by two weeks of night shift. Investigative services are led by a Detective Sergeant who oversees 3 Detectives. Supporting patrol are 2 Patrol Officers working a power shift to address the rise in retail crime that the Township has experienced in recent years. Clerical and staff services are provided by 4 civilian employees. Administrative duties are performed by the department head who is the Chief of Police.

Police Related Questions? The non-emergency number for the Limerick Township Police Department is (610) 495-7909.

EMERGENCIES - Dial 911

Local Organizations

AMBULANCE SERVICE

Freedom Valley Medical Rescue

309 Main Street
Harleysville, PA 19438
Phone: (215) 513-1880
info@fvmedrescue.org

Friendship Ambulance and Rescue

269 Green Street
Royersford, PA 19468
Phone: (610) 948-6234
www.rfd98.org

Lower Frederick Regional Ambulance Corp.

53 Spring Mount Road
Schwenksville, PA 19473
Phone: (610) 587-4261

Goodwill Ambulance

714 E High Street
Pottstown, PA 19464
Phone: (610) 970-0878
www.goodwillpottstown.org

AMERICAN RED CROSS

2221 Chestnut Street
Philadelphia, PA 19103
Phone: (215) 299-4000
www.redcross.org

HEALTH DEPARTMENT

Montgomery County Health Department

364 King Street
Pottstown, PA 19464
Phone: (610) 970-5040
www.montcopa.org

FIRE

Limerick Fire Department

www.LFD51.org

Limerick Fire Station

390 W. Ridge Pike
Limerick, PA 19468
Phone: (610) 489-2222

Linfield Fire Station

1077 Main Street
Linfield, PA 19468
(610) 489-2222

MEDICAL CENTER

Pottstown Hospital-Tower Health

1600 E. High Street
Pottstown, PA 19464
Phone: (610) 327-7000
www.towerhealth.org

LIMERICK TOWNSHIP LEAF & YARD WASTE

Collection Options



Township Drop Off Site

- January through October at Community Park
- November & December at Public Works Building

- First Monday of each month 8:00 AM – Noon

- Leaves and small sticks, does not accept grass clippings

Hetrick Gardens

2620 Swamp Pike
Pottstown, PA 19464

- No Charge to Limerick Residents (Residential only)
- Accepts Most Types of Yard Waste, from grass clippings to tree limbs and small stumps

Private Haulers

- Curbside pickup from your privately contracted trash hauler
- Each hauler is required by Limerick to pick up 4 times a year



As per Limerick Township Ordinance No. 377, the hours of operation for municipal waste collectors or haulers are:

7:00 A.M. to 8:00 P.M. Monday through Friday
8:00 A.M. to 6:00 P.M. on Saturday and Sunday

Any collections, as referenced above, performed outside of these hours will be considered a violation. Residents should call the Limerick Township Police Department at 610-495-7909 as violations of collection times are occurring.

Parks and Recreation



Limerick Community Park

TOWNSHIP PARKS

- **Limerick Community Park** - Swamp Pike and Ziegler Road
- **Manderach Playground** - Located within the Limerick Community Park
- **Veterans Park** - Ridge Pike located next to the Township Building
- **Linfield Sports Park** - Longview Road, Linfield
- **Trinley River Park** - Railroad Street and Trinley Road, Linfield
- **Kurylo Preserve** - N. Limerick Road and Pheasant Road

To view additional park and rental information please visit the Parks & Recreation Department at www.limerickpa.org.



Stone Hills Preserve



Meng Preserve



PECO Trail

PROGRAMMING

Limerick Township provides recreation programs for every age group, every season of the year. Please visit our website at www.limerickpa.org and refer to the Parks & Recreation Department.



Trinley River Park



Kurylo Preserve



Veterans Park



Linfield Sports Park

MISCELLANEOUS CONTACT INFORMATION

Spring-Ford Chamber of Commerce
313 W. Ridge Pike, 2nd floor • Limerick, PA 19468
Phone: (610) 489-7200 • Fax: (610) 454-0059
www.springfordchamber.com

Tri-County Chamber of Commerce
152 E. High Street, Suite 360 • Pottstown, PA 19464
Phone: (610) 326-2900 • Fax: (610) 970-9705
www.tricountyareachamber.com

Limerick Township Historical Society
545 W. Ridge Pike • Limerick, PA 19468
(610) 495-5229
www.limerickpahistory.org

District Justice - Richard H. Welsh
Magisterial District No. 38-1-19
497 W. Ridge Pike • Limerick, PA 19468
Phone: (610) 495-8440 • Fax: (610) 495-8442
Email: DC38119@montcopa.org

State Police - Skippack Station
2047 Bridge Road • Schwenksville, PA 19473
Phone: (610) 584-1250
www.psp.state.pa.us

Limerick Post Office
327 W Ridge Pike • Royersford, PA 19468
Phone: (610) 831-5604
www.usps.com

Royersford Post Office
354 N. Lewis Road • Royersford, PA 19468
Phone: (610) 792-4758
www.usps.com

Schwenksville Post Office
153 Centennial Street • Schwenksville, PA 19473
Phone: (610) 287-3551
www.usps.com

Spring-Ford School District
Administration Building
857 S Lewis Road • Royersford, PA 19468
Phone: (610) 705-6000
www.spring-ford.net

Royersford Free Public Library
200 South 4th Avenue • Royersford, PA 19468
(610) 948-7277
www.mc-npi.org/general/branchesroy.html

Scott's Limerick CAR WASH

838 North Lewis Rd.
Limerick, PA 19468

LIMERICKCARWASH.COM

SCAN ME

Just Cruisin'
AUTO SALES OF LIMERICK

247 Swamp Pike, Limerick, PA 19468
jcauto.com • 610-287-4523

LIMERICK HARDWARE COMPANY
HOME & GARDEN

Old-Fashioned Service and a Well-Stocked Store

712 W. Ridge Pike
Limerick, PA 19468
610-495-6000
610-495-6001 (fax)
info@LimerickHardwareCompany.com

Sunshine CAFE
The Best Coffee in Town!

Open 7 Days • Breakfast Served All Day
610-409-8420 • thesunshinecafe.net
BREAKFAST • LUNCH • DINNER

207 W. Ridge Pike
Limerick, PA

ZUBER REALTY

www.ZUBERrealty.com

RICHARD A. ZUBER INSURANCE
For the Protection YOU Deserve...
www.zuberinsurance.com

TRI-COUNTY PLUS APPRAISAL SERVICE
Home Right, Fair Value
www.tri-countyappraisal.com

St. Teresa of Calcutta Roman Catholic Parish

256 Swamp Pike, Schuylkill County, PA
610-202-2525

All are welcome!
Become part of an exciting faith community
Worship • Education • Child Care

KELLY'S WORLD CLASS AUTOMOTIVE

444 West Ridge Pike
Limerick, PA 19468
484-369-5342
www.KellysWorldClassAuto.com

Complete Automotive Service Team
• PA State Inspection and Emissions
• Brake Services
• Engine Diagnostic and Repair
• Steering and Suspension
• Routine Maintenance

Rossi's Pizzeria

301 N. Lewis Rd. • Park Town Plaza • Royersford
610.792.1974
rossispizzeria.com

Our dough is made fresh daily!

TRC is there!

TOTAL RESTORATION CONTRACTING

Restoring your life back to the way it should be!

610-489-1650
www.trcisthere.com

Limerick Dental Care

Serving Montgomery County since 1997

Venessa Adolf, D.M.D.
610.409.2644
www.LimerickDentalCare.com

Family & Cosmetic Dentistry
397 West Ridge Pike • Limerick, PA 19468

TURTLE CREEK GOLF

Turtle Creek is a 4.5 star, 18 hole championship golf course in the heart of Montgomery County.

610-489-5133
turtlecreekgolf.com

• Two 18 hole courses • Putting Green • Sand Trap • Water Hazard • Golf Course • Fully Lit for Nighttime Play • Family Friendly

610-489-7859
www.turtlecreekgolf.com

303 W. Ridge Pike • Limerick, PA

Peter Lumber Company

Lumber • Doors • Windows • Mouldings • Kitchen & Bath

207 W. Ridge Pike • Limerick, PA 19468
610-489-9301 • www.peterlumber.com

Lafayette WELDING, INC.

64 WEST RIDGE PIKE | LIMERICK, PA 19468

JOHN T. MELLON, III
PRESIDENT

P: 610-489-3434 | F: 610-489-3928 | jmellon66@comcast.net

meineke

DOING CAR CARE RIGHT

301 Main Street | Royersford
(610) 792-3294

\$10 off your next visit!

SPRING VALLEY YMCA

the Y

JOIN NOW
& let the fun begin!

MENTION THIS AD FOR \$0 ENROLLMENT FEE

HIDE SEEK STORAGE

For All Your Storage Needs

415 West Ridge Pike
Limerick, PA 19468
610-495-5556
610-495-5059 fax

www.hideandseekselfstorage.com

Limerick Veterinary Hospital

Mention this card and you'll receive a FREE Nail Trim!

610-489-2848
610-489-2618
E: save@limerickvet.com
A: 345 W. Ridge Pike, Limerick, PA 19468

www.limerickvet.com

PhoenixFed.com

451 W. Ridge Pike, Suite 201
Limerick, PA
Next to Wal-Mart

Limerick Collision Center

60 INDUSTRIAL PARKWAY
LIMERICK, PA
610-495-2000

Specializing in Antique & Classic Cars
Expert Auto Body Repair, Foreign & Domestic Cars, Trucks & Boats
Complete Mechanical Repair Facility
State Inspection • Salvage Yard Auto Sales • Used Auto Parts

MAJESTIC FLOORING & HOME DESIGNS, INC.

84 W. Ridge Pike
Limerick, PA 19468

Hardwood • Tile • Custom Staircases • Backsplashes
Kitchen & Bathroom Remodels • Add More Open 7 Days • Free Estimates

MajesticFlooring@Limerick.com • 610-621-9744

JC AUTO SERVICE INC.

610.489.3592

State & Safety Emissions • All Makes & Models
Oil Changes • Brakes • Computer Diagnostics
Engine Repair • Tune Ups • A/C Service
Tires & Alignment

365 S. Limerick Rd., Limerick, PA 1468

Landis Creek Golf Club

www.landiscreekgolfclub.com

Creekside Bar & Grill • The Loft at Landis Creek
www.creeksidebarandgrill.com www.loftatlandiscreek.com

ALL SMILE DENTAL CENTER

Cosmetic and Family Dentistry

Ning Zhang, D.M.D.
393 N. Lewis Road
Royersford, PA 19468
(610) 792-0060

1179 Dekalb Pike
Blue Bell, PA 19468
(610) 272-0400

ALDERFER GLASS

The Clear Advantage in Glass Products

205 W. Ridge Pike | Limerick, PA 19468
610-489-2221 | 610-409-2913 fax

www.alderferglass.com

AUTO HOME BUSINESS

Park Towne Beverage, Inc.

310 North Lewis Road, Royersford, PA 19468

Open 7 Days
ParkTowneBeverage.com 610.948.0970

Katie Harris

TRAFFIC PLANNING AND DESIGN, INC.

An ENR 500 Top Design Firm serving the eastern United States since 1989

www.tradp.com

HRMML

John J. Iannozzi

HARRING, RUBIN, MULLIN, MAXWELL & LUPIN, PC

www.HRMML.com Phone: 215.661.0400 Fax: 215.661.0515 Iannozzi@HRMML.com

EPPS BEVERAGES

80 W. Ridge Pike (Rt. 422), Limerick, PA 19468 • 610-489-5555

PHOENIXVILLE HOSPITAL

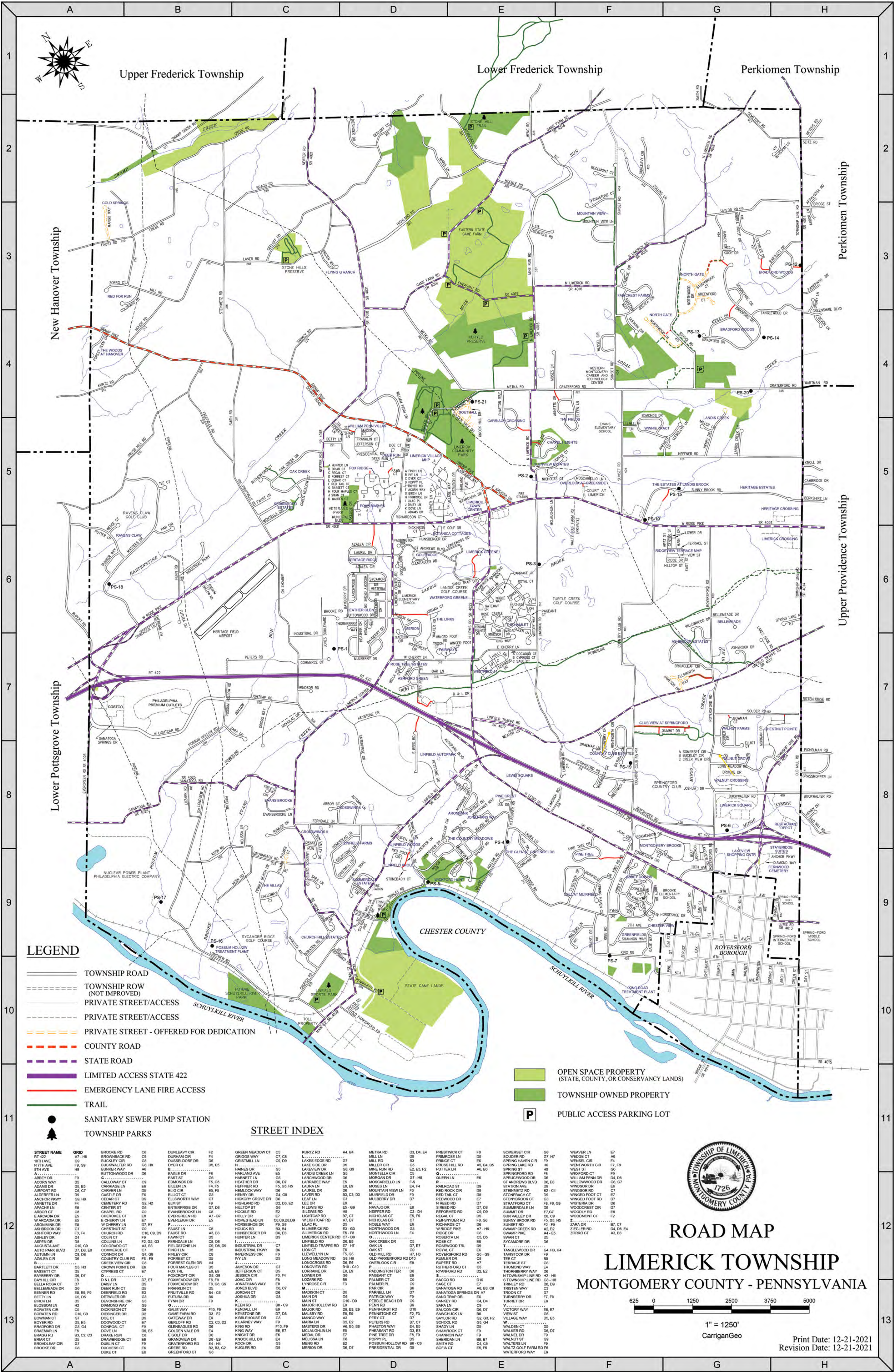
TOWER HEALTH
Advancing Health. Transforming Lives.

Limerick's Hometown Bank

Colonial COMMUNITY BANK

1STCOLONY.COM

FDIC



This Community Map is produced for **Limerick Township** by **HOMETOWN PRESS - 215-257-1500**
2023, All rights reserved.®

2023 TOWNSHIP MAP & INFORMATION GUIDE

AREA UTILITIES

Cable

Comcast Cable: 190 Shoemaker Road Pottstown, PA 19494 • (610) 323-6400 • www.comcast.com
Verizon-FIOS: (800) 837-4966 • www.verizon.com

Telephone

Verizon (New Service): (800) 922-0204 • www.verizon.com

Water

Pennsylvania American Water (Customer Service): (800) 565-7292 • www.amwater.com

Electric

PPL Electric Utilities (Customer Service Center):
827 Hausman Road, Allentown, PA 18104 • (800) 342-5775 • www.pplelectric.com
PECO Energy Company (Customer Service Center):
2301 Market Street, Philadelphia, PA 19103 • (800) 494-4000 • www.exeloncorp.com

Sewer

Essential Utilities (Aqua America of PA):
762 W. Lancaster Avenue, Bryn Mawr, PA 19010 • (877) 987-2782 • www.aquaamerica.com

ROADS

Adopt a Highway

PennDOT: (610) 275-2368

Potholes

State Roads: PennDOT 1-800-FIX-ROAD
County Roads (Swamp Pike): County Maintenance (610) 278-3612
Township Roads: Limerick Township Public Works Department (610) 495-6432
Private Roads: Contact HOA or Developer

Damaged Mailboxes due to Plowing

State Roads: PennDOT 1-800-FIX-ROAD
County Roads (Swamp Pike): County Maintenance (610) 275-2368
Township Roads: Limerick Township Public Works Department (610) 495-6432
For a list of roads, please visit: www.limerickpa.org/158/Public-Works
Private Roads: Contact HOA or Developer

ANIMAL CONTROL

Animal and Deer Removal

State Roads: PennDOT (610) 275-2368, Option 0
Township Roads: Pennsylvania Game Commission (610) 926-3136