

Spring 2020

Limerick Township

Newsletter

United States
**Census
2020**

**LIMERICK is
Counting**

**on Your
Participation!**

Message from the Chairman



Thomas J. Neafcy, Jr.
Chairman

I am pleased to serve as the Board Chairman for 2020 and look forward to working with my fellow Supervisors on several important projects planned for this year. One such endeavor is an update to the Township's 2006 Open Space Plan which began in earnest last November. Over the past 14 years since the Plan was established, the Limerick community has changed significantly as a result of growth and development. The current Open Space Plan helped guide the Township during this period which resulted in an additional 125-acres of land added to Limerick's park and open space system. All acquisitions, which were prioritized in the Open Space Plan, were achieved by way of grant funding and pro-active preservation strategies which did not require an increase in taxes. This ongoing study, expected to conclude in June, will provide open space objectives for the next 10 to 15 years and continue a Board policy which seeks to preserve open space and protect the Township's natural resources, in a common sense and cost-effective manner.

Another important long-range project that will take place this year will be a Master Plan Study of Linfield Village. With its location along the Schuylkill River, Linfield is projected to be a desired area for future development and the Study will seek to establish a strategy that will set forth a new vision for the Village and balance the anticipated growth with required infrastructure, utility, and roadway upgrades. The Township also seeks to protect the natural resources along the river while expanding recreational, trail, boating, and fishing related opportunities.

The Board invites everyone to participate in the public discussions which will take place throughout the year with both planning studies. We also ask for your cooperation with the upcoming 2020 US Census which will take place beginning in April. Over the past decade, the Township has successfully received over \$14 million in grant funding used for park upgrades, open space purchases, support for emergency services, roadway improvements, and trail construction projects. Grant funding reduces the burden on real estate taxes needed to provide required township services, is directly tied to accurate census numbers - so your participation is important! I ask that you please read the information within this newsletter on how you can participate in the Open Space and Linfield Master Plan studies, as well as, the upcoming 2020 US Census. You can also visit the Limerick Township website at www.LimerickPA.org for more information.

Sincerely,

Tom Neafcy



LIMERICK TOWNSHIP BOARD OF SUPERVISORS SWORN IN FOR 6-YEAR TERMS



**At the Board of Supervisors
Reorganizational meeting
on Monday, January 6th,
incumbent Supervisor
Kenneth W. Sperring, Jr.,
and newly elected
Supervisor Michael J.
McCloskey, III were sworn
in by Justice Richard H.
Welsh; each will serve a
6-year term.**



The 2020 Limerick Township Board of Supervisors



Pictured from Left to Right: **Michael J. McCloskey, III; Thomas J. Neafcy, Jr., Board
Chairman; Kara Shuler, Vice-Chair; Patrick Morroney; Kenneth W. Sperring, Jr.**

UNITED STATES 2020 CENSUS

Make Limerick Count!

An accurate count of all Limerick residents will help the Township receive future grant funding to supplement the \$14 million received over the past decade. We ask for your participation with the upcoming U.S. Census so the Township is able to continue to receive grant funding for the important projects and services listed on this page.

For more information visit:

<https://www.census.gov/en.html>

Benefits to the Township from Pennsylvania state allocations include the following:



Grant funding for local improvements, such as planning and construction projects for parks, as well as, **Recycling Grants**.



PennDOT Liquid Fuels Reimbursements for road and bridge repairs expenditures.



United States Census Bureau **TIMELINE:**

On or between	You'll receive:
March 12-20	An invitation to respond online to the 2020 Census. (Some households will also receive paper questionnaires.)
March 16-24	A reminder letter.
	If you haven't responded yet:
March 26-April 3	A reminder postcard.
April 8-16	A reminder letter and paper questionnaire.
April 20-27	A final reminder postcard before we follow up in person.



Firemen's Relief Funds are distributed to local volunteer fire departments to assist with costs of equipment and apparatus.

Impact on future Elections:

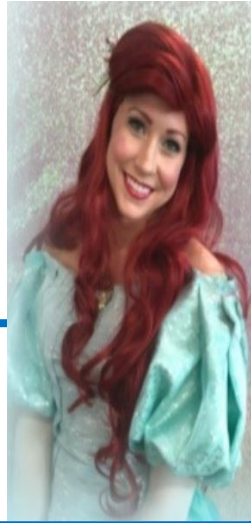


Determines how many U.S. House of Representatives & Electoral College Ballots each state receives.

PARKS & RECREATION

For Detailed Information on all Limerick Township Parks & Recreation Events, Programs, Discount Tickets, and Bus Trips — please stop by the Township Office or visit the Township website at: www.LimerickPA.org/155/Parks-Recreation

Family Science Night
Thursday
March 19
CANCELLED



Parents Night Out
Friday
March 20
CANCELLED

Saturday, Under the Sea Story
March 21
Time: 10:00am - 12:00pm
Princess Ariel
CANCELLED

Sports Equipment Swap
March 28
CANCELLED

Saturday April 4
Happy Easter
BRF
FAST
with the bunny
CANCELLED

TRAVEL
PREVIEW
NIGHT
Wednesday
March 18

Limerick Township Parks & Recreation presents
Great Trains & Grand Canyons
October 18, 2020
6 days
CHANGED TO A WEBINAR

Saturday April 25
COMMUNITY
YARD SALE

Discount Tickets - have fun at many local attractions while helping to support Parks & Rec

LIMERICK
YOUTH NFL FLAG FOOTBALL LEAGUE
April 18 — June 6

Thursday
May 28
VENDOR
BINGO!

Monday, June 22
First Day of Camp Shamrock
SUMMER CAMP

PUBLIC MEETINGS

Linfield Village Master Plan

Come to public meetings to share your opinions
about the future of Linfield Village



Public Meetings

Public meetings will take place
7:00 p.m. - Limerick Township Building
(646 W. Ridge Pike Limerick, PA
19468)

February 25th, 2020: Public Meeting 1

April 16th, 2020: Public Meeting 2

June 30th, 2020: Public Meeting 3

November 5th, 2020: Public Meeting 4

YOUR OPINIONS & IDEAS ARE IMPORTANT!

PLEASE JOIN US WITH THESE PLANNING
STUDIES THAT WILL HELP MAP THE
FUTURE DIRECTION OF THE TOWNSHIP

TELL US WHAT YOU THINK



HAVE YOUR SAY

Limerick Township

Comprehensive Open Space Plan

Please join us in developing the Limerick Township
Comprehensive Open Space Plan.

We want to hear your thoughts as we continue to
address the needs of the community.

Next Meeting Dates

Public Meeting 3: May 7, 2020

Public Meeting 4: June 16, 2020

7:00 PM at the Limerick Twp Bldg

464 W Ridge Pike, Limerick

Please fill out the public opinion
survey :

<https://www.surveymonkey.com/r/LimerickOSP>

Property Maintenance is a Year-Round Responsibility



Home maintenance makes for good neighbors and safer communities. Regular upkeep could also save you money on costly repairs. Below is a helpful list of exterior home and property maintenance items that are required to be maintained on a consistent basis by the Township Code (and appreciated by your neighbors):

Leaves, Weeds, Trees, and Grass —

- Weeds, or any vegetation whatsoever not edible or planted for some useful or ornamental purpose, ***in excess of six inches in height are to be cut or removed*** – when they are within 50 feet of the road or other property line.
- Keep vegetation (including bushes or low hanging tree branches) ***near or above sidewalks clear*** – be especially mindful in school zones so children do not have to infringe onto the roadway.
- Don't forget those places ***by the road and intersections where weeds/grass could hinder driver sight lines*** and cause unsafe conditions.
- ***Avoid blowing grass clippings into the street*** – helps to prevent clogged storm drains and this is also very dangerous for motorcycles.
- ***Rake your leaves in the fall and dispose of properly*** – remember to check the Township website at [www.LimerickPA.org](http://www.limerickpa.org) under Recycling Information for yard & leaf waste drop off locations.
- ***Brush Piles*** – Reminder: ***Limerick Township has an outdoor open burning restriction***. For further information please visit the Township website under the Emergency Services Department page: <http://www.limerickpa.org/DocumentCenter/View/115/Burning-Regulations-in-Limerick-Township-PDF>



Grading & Drainage — should be maintained to avoid the erosion of soil and to ***prevent the accumulation of stagnant water***.

Swimming Pools — unused pools must be maintained to prevent the collection of ***stagnant water***.

Retention Basins — if your property abuts a stormwater detention basin, keep the area ***surrounding the basin free of any debris*** which could enter the basin and cause a blockage or effect its functionality.



Sidewalks — shall be kept in proper state of repair and ***maintained free from hazardous conditions***, such as uneven joints which would cause tripping. In cases of inclement weather, ***removal of any accumulation*** of snow, slush, ice and/or freezing rain from public sidewalks, ***must occur within 24 hours after the precipitation ceased to fall, gather, or accumulate***, in order that they are ***clear for safe passage of the general public***.

Accessory Structures — including ***detached garages, fences, and walls shall be maintained in good repair, structurally sound, and sanitary*** so as not to pose a threat to the public health, safety, or welfare.

Accumulation of rubbish or garbage — all exterior property or premises, ***shall be free from any accumulation of rubbish or garbage***.

Motor vehicles — No ***inoperative or unlicensed motor vehicle*** shall be parked, kept, or stored on any premises. No vehicle shall at any time be in a ***state of major disassembly, disrepair***, or in the process of being stripped or dismantled, unless performed inside a structure ***approved*** for such purposes.

POLICE NEWS



With great appreciation and gratitude, the Board of Supervisors gave special recognition to Police K-9 Flynn at the January 21st Board meeting for his loyal and faithful service to the Police Department and our community. After 8 years as a Limerick Township Police Officer, Flynn is retiring to the care and home of his handler, K-9 Officer Kevin McGuigan.



During his career Flynn has been called upon to track down and search for criminals, search for explosives and was always a big hit during our public relation events. Police K-9 Flynn will be missed.

Pictured from Left to Right: Police Lt. Robert Matalavage, K-9 Officer Kevin McGuigan, and Police K-9 Flynn.

3 Easy Ways to Stay Informed on What's Happening in the Township



FOLLOW US ON
SOCIAL MEDIA



<https://www.facebook.com/LimerickTWP/>

<https://www.facebook.com/LimerickPolice>

<http://www.facebook.com/LimerickPR>



Limerick Township
Parks & Recreation



Notify Me®

**Get Email or Text
Message Alerts on
new information
posted on the
Township website**

To sign up for these alerts, visit www.LimerickPA.org and click on **Notify Me** in the white boxes located on the Home page. Login by entering your email and select the notification categories you would like to receive.



Help save a tree
and sign up to
receive the
Township
Newsletter
electronically.

If you prefer receiving the newsletter electronically rather than through the mail, please email RyanY@LimerickPA.org with your name, street address, and phone number. Your name will be removed from our mailing list and you will begin receiving the quarterly newsletter by email.

Note: We will add multiple email addresses per household. Also, the electronic version will contain additional information and copies of each event flyer.





VANPOOLING

AN AVERAGE AMERICAN SPENDS 42 HOURS EACH YEAR STUCK IN TRAFFIC. GET YOUR TIME BACK BY VANPOOLING

422MYWAY.COM



Limerick Fire Dept.

CARNIVAL

May 12 - 16, 2020

Limerick Fire Department

390 Ridge Pike • Limerick, PA 19468
(Behind the Firehouse)

Open weekdays @ 6 PM - Sat. @ 4 PM

For more information visit our website

www.limerick.bartshow.com

Midway By: Bartlebaugh Amusements, Inc. - www.bartlebaughamusements.com

Spring Stormwater Management

Ways to reduce stormwater runoff while improving wildlife habitat

Remove these invasive species:



source: vtinvasives.org

Japanese Barberry

- Shrub that spreads quickly and crowds out native plants
- Presence of Lyme disease carrying ticks is increased in areas where barberry is prevalent



source: bhg.com

Bradford Pear

- Fast growing tree that out competes natives for light and nutrients
- Branch structure makes it susceptible to breakage and splitting



source: americanmeadows.com

Day Lily

- Quickly spreads from yards into natural areas where it forms dense patches that displace native plants
- Thick tubers make control and removal difficult

Plant these natives species instead:



source: Wikipedia

Common Ninebark

- Fast growing shrub that is drought tolerant, disease and insect resistant
- Attracts bees and birds
- Produces white flowers in early summer



source: Amazon.com

Eastern Redbud

- Deer resistant tree that does well in shady locations
- Attracts bees and birds
- Produces fragrant pink flowers in early spring



Butterfly Milkweed

- Deer and drought resistant perennial
- Attracts butterflies and hummingbirds. Larval host for monarchs
- Produces long lasting, showy, orange flowers throughout the summer



Limerick Township
646 West Ridge Pike
Limerick, PA 19468

PRSR STD
U.S. POSTAGE
PAID
PERMIT NO. 182
POTTSTOWN, PA
19464



If you prefer receiving the newsletter electronically,
please e-mail RyanY@LimerickPA.org to be added to the e-mail list.

Limerick Township Municipal Building
646 W. Ridge Pike, Limerick, PA 19468
(610) 495-6432
www.LimerickPA.org

Board of Supervisors

*1st and 3rd Tuesday of each month,
7:00 P.M. at the Township Building*

Planning Commission

*4th Thursday of each month,
7:00 P.M. at the Township Building*

Parks & Recreation

*2nd Tuesday of each month,
7:00 P.M. at the Township Building*

Zoning Hearing Board

*4th Wednesday of each month,
6:30 P.M. at the Township Building*

Board of Supervisors

Thomas J. Neafcy, Jr. - Chairman
Kara Shuler - Vice Chair
Kenneth W. Sperring, Jr.
Patrick Morroney
Michael J. McCloskey, III

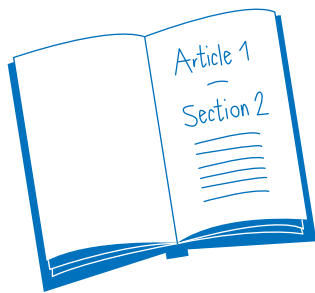
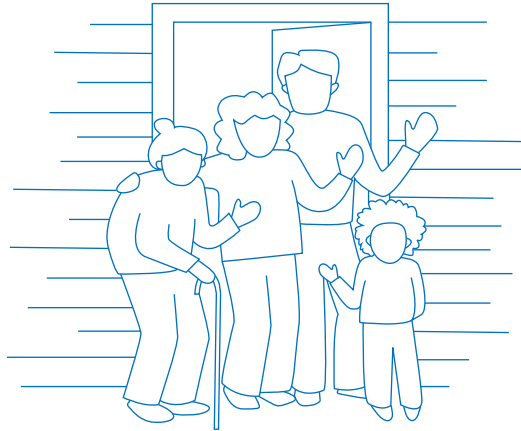


CENSUS 101: WHAT YOU NEED TO KNOW

The 2020 Census is closer than you think!
Here's a quick refresher of what it is and why it's essential that everyone is counted.

Everyone counts.

The census counts every person living in the U.S. once, only once, and in the right place.

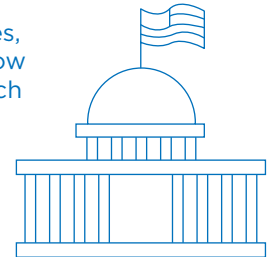


It's in the constitution.

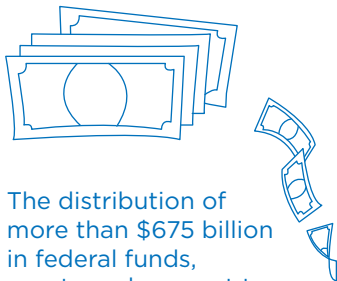
The U.S. Constitution mandates that everyone in the country be counted every 10 years. The first census was in 1790.

It's about fair representation.

Every 10 years, the results of the census are used to reapportion the House of Representatives, determining how many seats each state gets.

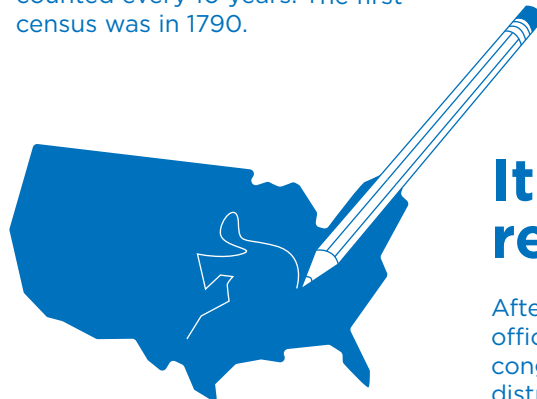


It's about \$675 billion.



The distribution of more than \$675 billion in federal funds, grants and support to states, counties and communities are based on census data.

That money is spent on schools, hospitals, roads, public works and other vital programs.

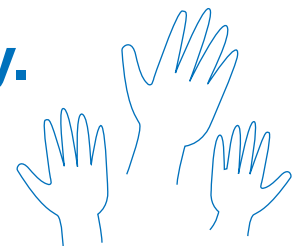


It's about redistricting.

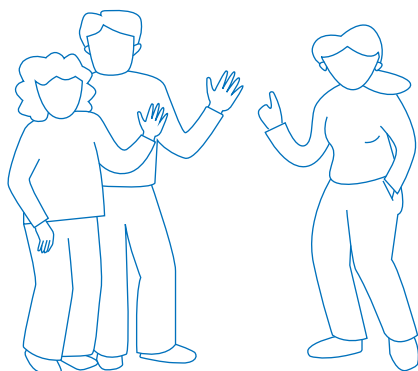
After each decade's census, state officials redraw the boundaries of the congressional and state legislative districts in their states to account for population shifts.

Taking part is your civic duty.

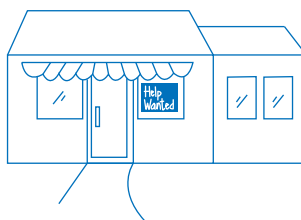
Completing the census is mandatory: it's a way to participate in our democracy and say "I COUNT!"



Census data are being used all around you.

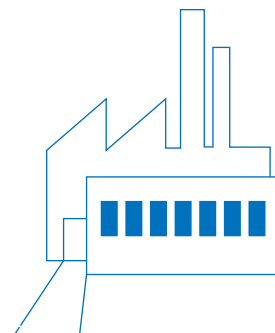
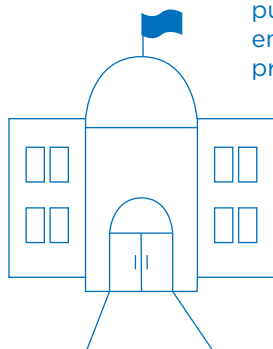


Residents use the census to support community initiatives involving legislation, quality-of-life and consumer advocacy.



Businesses use census data to decide where to build factories, offices and stores, which create jobs.

Local governments use the census for public safety and emergency preparedness.



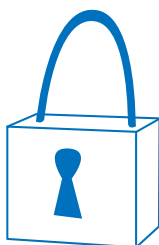
Real estate developers use the census to build new homes and revitalize old neighborhoods.



Your privacy is protected.

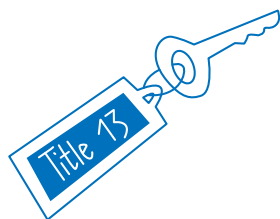
It's against the law for the Census Bureau to publicly release your responses in any way that could identify you or your household.

By law, your responses cannot be used against you and can only be used to produce statistics.



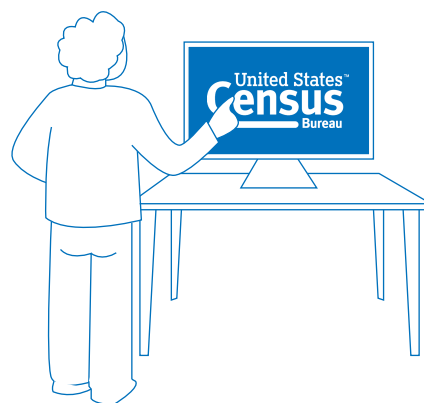
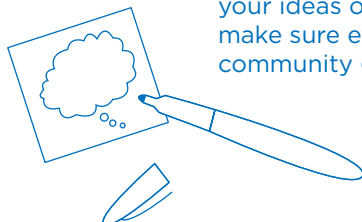
2020 will be easier than ever.

In 2020, you will be able to respond to the census online.



You can help.

You are the expert—we need your ideas on the best way to make sure everyone in your community gets counted.





Limerick Township
Pennsylvania

Linfield Village Master Plan

Historic Linfield Village is located on the Schuylkill River at the southern tip of Limerick Township and is identified in the 2009 Limerick Township Comprehensive Plan as one of four growth areas.

Limerick Township is completing a master plan for this site to identify improvements that will promote and enhance the village's sense of place, protect and enhance its' historic character, enhance nearby open spaces, enhance the historic streetscape, and promote the adaptive reuse of old industrial sites and existing architecture.

You are invited to attend the public meetings below to share current experiences in Linfield Village as well as your opinions on desired improvements

Public Meetings

Public meetings will take place
7:00 p.m. - Limerick Township Building
(646 W. Ridge Pike Limerick, PA 19468)

February 25th, 2020: Public Meeting 1

April 16th, 2020: Public Meeting 2

June 30th, 2020: Public Meeting 3

November 5th, 2020: Public Meeting 4



Limerick Township

Comprehensive Open Space Plan

Please join us in developing the Limerick Township
Comprehensive Open Space Plan.
We want to hear your thoughts as we continue to
address the needs of the community.

Next Meeting Dates

Public Meeting 3: May 7, 2020

Public Meeting 4: June 16, 2020

7:00 PM at the Limerick Twp Bldg
464 W Ridge Pike, Limerick

**Please fill out the public opinion
survey :**

<https://www.surveymonkey.com/r/LimerickOSP>

Limerick Township Parks & Recreation presents *Great Trains & Grand Canyons*

6 Days **October 18, 2020**

Travel Preview!

**WILL BE A WEBINAR - see
Township Website P&R Page
for updated information
Wednesday March 18, 2020
at 6:00 p.m.**

HIGHLIGHTS

- Two Rail Journeys
*Grand Canyon
Railway*
*Verde Canyon
Railroad*
- Grand Canyon Nat'l
Park
- Oak Creek Canyon
- Sedona Trolley Tour
- Chapel of the Holy
Cross
- Tlaquepaque &
Uptown Sedona
- Montezuma Castle
- Jerome
- Chuckwagon Supper
& Show
- Old Town Scottsdale

Booking Discount - Save \$200 per couple!*

Contact Information

Limerick Township Parks & Recreation • Attn: Ryan Yanchocik
646 West Ridge Pike • Limerick, PA 19468
610.495-6432 / 610.569.1069 (Fax)
ryany@limerickpa.org / www.limerickpa.org



Booking #138334 (Web Code)

Great Trains & Grand Canyons

DAY 1: PHOENIX - SEDONA

Arrive at the Phoenix Airport and meet your Tour Director. Board a deluxe motorcoach and travel north to beautiful **Sedona**. This upscale resort, retirement and artist community is set amongst the red-hued rocks of Oak Creek Canyon. Your home for the next five nights is a picturesque property in the Sedona area. Tonight enjoy a **Welcome Dinner** with fellow travelers.



Overnight: **Sedona**

DAY 2: SEDONA

Start a great day with a **Sedona Trolley Tour** featuring the **Chapel of the Holy Cross** and **Airport Mesa** for spectacular views of the Sedona area. The trolley guide will give you insight into the various rock formations, indigenous vegetation and history of this remarkable area. Later visit **Uptown Sedona** and the Spanish- Mexican Village of **Tlaquepaque** to explore these wonderful areas full of art galleries shopping opportunities and restaurants. Maybe take an optional Guided Jeep Tour into the Sedona backcountry. This evening enjoy Sedona at your own pace.



Overnight: **Sedona**

DAY 3: GRAND CANYON

Begin an unforgettable day with a drive through amazing **Oak Creek Canyon**, a sixteen mile long canyon known for its spectacularly colored white, yellow and red cliffs dotted with pine, cypress and juniper. Then arrive in Williams to board the **Grand Canyon Railway** for a nostalgic two-hour train journey that delivers you to the awe-inspiring **South Rim of Grand Canyon National Park** for free time and lunch on your own. Six million years in the making the Grand Canyon's dynamic colors and textures inspire reflection at nature's power and beauty. Later board your motorcoach to see the Grand Canyon from other points of interest. Stop in Flagstaff for dinner before returning to Sedona.



Overnight: **Sedona**

DAY 4: MONTEZUMA CASTLE - JEROME - VERDE CANYON RAILROAD

This morning visit the **Montezuma Castle National Monument** which contains ruins of a cliff dwelling built in the 12th and 13th centuries by the Sinagua Indians. Later visit the old mining town of **Jerome**, once a virtual ghost town, now restored with shops, museums and art galleries. Next travel to **Clarkdale** to board the **Verde Canyon Railroad** also known as the **Wilderness Train**. The spectacular four-hour ride in a First Class Railcar takes you between two national forests, past crimson cliffs, over old-fashioned trestles and through a 680-foot tunnel. Early evening return to Sedona.



Overnight: **Sedona**

DAY 5: DAY AT LEISURE - BLAZIN' M RANCH

Today is at leisure in **Sedona**. Enjoy the wonderful amenities of your resort. Maybe spend the day shopping, sightseeing on your own or on a local golf course. An optional tour will be available. This evening experience a Farewell Dinner at the **Blazin' M Ranch** where you will enjoy a hearty **Chuckwagon Supper and Western Stage Show**.



(B,D)

Overnight: **Sedona**

DAY 6: SEDONA - SCOTTSDALE - FLIGHT HOME

This morning travel to **Old Town Scottsdale** where Western storefronts recreate an aura of the past. Later arrive at the Phoenix Airport for your flight home filled with unforgettable memories of your **Great Trains & Grand Canyons Tour**.



(B)

ACCOMMODATIONS

5 Nights - Hilton Sedona Resort, Sedona Courtyard by Marriott or Poco Diablo Resort, Sedona

On some dates alternate hotels may be used

Tour Activity Level

Easy **1** **2** **3** **4** Active

INCLUSIONS

- Roundtrip Airfare - PHL
- 5 Nights Accommodations
- Sightseeing per Itinerary
- Admissions per Itinerary
- 8 Meals:
5-Breakfasts & 3-Dinners
- Hotel Transfers
- Professional Tour Director
- Motorcoach Transportation
- Baggage Handling at Hotels

TOUR RATES

Booking Discount*:	\$2695 pp double
Regular Rate:	\$2795 pp double
Single Supplement:	+\$750



SPRING BREAK CAMPS

Cartooning Camp-Animals Theme

In the wonderful wide world of cartoon characters (in comics, movies and video games) none are more beloved than cartoon animals - from Mickey to Snoopy to SpongeBob (yes, he's an animal) to Zootopia to Angry Birds and beyond. Led by artist Mr. David C. Perry, in a fun and positive atmosphere, we'll draw and discuss everything from cute little pets to outrageous fantastic beasts - and we'll even create our own Super Critters, flip books and comic strips. All materials are provided and everyone gets step-by-step instruction, hands-on helpful hints and an array of cool resources for on-site and future inspiration.

April 8, 9:00 AM to 12:00 PM

Ages: 7 to 13

Fee: \$50

Limerick Township Building

Cupcake Workshop

Wannabe contestants on Cupcake Wars or Nailed It! will want to learn basics of decorating cupcakes using buttercream frosting. Young chefs will learn about using primary/secondary colors to tint frosting, then fill pastry bags, practice with a variety of popular tips, and create their own masterpieces on one chocolate and one vanilla cupcake.

April 9, 9:00-11:00 AM

Ages: 8 to 12

Fee: \$30

Limerick Township Building

Limerick Youth NFL Flag Football League

Spring 2020 Season Information

Season begins Saturday, April 18, 2020



*Register
TODAY!*




LIMERICK

YOUTH NFL FLAG FOOTBALL LEAGUE



Youth boys and girls will be organized and play according to national NFL flag football rules. The league will provide jerseys, referees, flags, fields and footballs. Volunteer coaches are needed for teams. No prior experience is necessary. The program is a one day commitment.

1-hour practice is scheduled before a 1-hour game weekly. During the season teams will play double-header games to replace the practice. Athletic attire and non-metal football cleats/sneakers required. Mouthpieces are recommended, but not required.

League directors will contact you via email about your exact evaluation time on 4/18/20.

Age: 5-13
Location: Limerick Community Park
Date: 4/18/19 – 6/6/20
Day: Saturday (Times will vary)
9:00 AM, 10:00 AM, 11:00 AM, or 12:00 PM
Cost: \$150

Ryan Yanchocik
Recreation Assistant
Limerick Township
646 W. Ridge Pike
Limerick, PA 19468
(610) 495-6432; office



www.limerickpa.org/155/Parks-Recreation



Senior Chef 70's Flashback Fondue Party

Join Kitchen Wizards for this flashback to the 1970s with this
fun cheese and chocolate fondue class!

April 23, 10 AM to 12 PM

\$10 per person

Sponsored by





Limerick Township Parks & Recreation

Saturday, April 25th



\$10 per space

7:00 am — 12:00 pm

Limerick Community Park

*(Spots are 16 feet long and 10 feet wide
- your vehicle MUST fit into the space)*

Vendors:

To reserve a space, please contact the Limerick Parks & Recreation office at www.limerickpa.org or 610-495-6432. Reservations are on a “first-come, first-serve basis” You must supply your own table, chairs and change.

Note:

This is a sellers only event. Vendors will not be permitted to register if they only wish to advertise for a cause or business. LTP&R is not responsible for keeping track of direct sale companies who choose to attend. Also, vendors are not permitted to sell food or drinks.

Limerick Fire Dept. CARNIVAL

0012536

Thrill Rides



Games



Great Food



LIVE Entertainment

9857100

May 12 - 16, 2020

Limerick Fire Department

390 Ridge Pike • Limerick, PA 19468
(Behind the Firehouse)

Open weekdays @ 6 PM - Sat. @ 4 PM



Limerick Fire Dept. Carnival

**\$2
OFF**

Unlimited Ride Wristband

Save \$2.00 per wristband.
Valid up to family of 4 per coupon.
Wristband good for day of
purchase only.
Cannot be combined with any
other offer.
Valid Tues., Wed., Thurs.,
& Sat. only.
Not valid toward MEGA-Band.



Proceeds Benefit the Limerick Fire Department

Bartlebaugh Amusements, Inc. - www.bartlebaughamusements.com

For more information visit our website

www.limerick.bartshow.com

Midway By: Bartlebaugh Amusements, Inc. - www.bartlebaughamusements.com



LIMERICK TOWNSHIP PARKS & RECREATION

THURSDAY, MAY 28TH

COPPERFIELD INN AT LAKESIDE

594 W RIDGE PIKE

STARTS AT 6:00 PM * DOORS OPEN AT 5:00 PM

ENTRANCE FEE ADVANCE PURCHASE \$25.00 /\$30 AT DOOR

PRICE INCLUDES

2 COMPLIMENTARY GLASSES OF WINE OR BEER,
COMPLIMENTARY APPETIZERS & BINGO CARDS

CASH BAR

ADDITIONAL BINGO CARDS AVAILABLE FOR PURCHASE

BINGO * BASKET RAFFLES * 50/50

Copperfield Inn
AT LAKESIDE



A New Way to Commute

In southeastern Pennsylvania, 76% of commuters drive alone to work, and only 9% carpool (U.S. Census Bureau, 2016). Carpooling is an alternative transportation mode that helps to reduce the number of people who drive alone. Something the U.S. 422 Corridor could benefit from since it continues to be one of the most congested roadways in Montgomery County with over 100,000 vehicles traveling it per day!

If more people choose carpooling over driving alone, we could alleviate congestion, improve the environment and quality of life for our region.

We need to start looking at our commuting options and make better choices for our quality of life. The [422 My Way](#) campaign can help improve your journey today. [422 My Way](#) promotes transportation alternatives that avoid driving alone such as carpooling, vanpooling, public transit, biking, walking or working from home.

Carpooling is one of the easiest alternative transportation modes to participate in. Through the [422 My Way](#) campaign you can find information on the Share-A-Ride program. Share-A-Ride is a free, online service that matches commuters with potential carpool. Visit 422myway.com and sign up through the pledge page today. Once signed up, commuters create a profile with their personal preferences and are matched with potential carpools or vanpools in their area. Take back your time sitting in traffic and save money on your commute by signing up for the program today!

If you live and/or work along the 422 Corridor we encourage you to visit www.422myway.com to find relevant resources, as well as “take a pledge” to try an alternative option to driving alone. Take the pledge and participate in contests throughout the campaign to be entered to win raffle prizes. The campaign goes until May 2020.

Also, follow the campaign on social media by liking us on Facebook at [@422coalition](#) and following us on Twitter at [@US422coalition](#).



Stacey Weiss, TDM Manager, GVF. To reach Stacey by email: sweiss@gvftma.com or 610-354-8899.

DID YOU KNOW?

A
HOUSEHOLD CAN *SAVE*
\$10,000 ANNUALLY

BY TAKING PUBLIC TRANSPORTATION AND
LIVING WITH ONE LESS CAR

422MYWAY.COM

#422MYWAY

ABOUT 18% OF A
PERSON'S MONTHLY
BUDGET IS SPENT ON CAR
MAINTENANCE, REPAIRS
AND GAS

**SAVE MONEY &
CARPOOL!**





traveling by public
transit is **10 times safer**
per mile than traveling by car

DID YOU KNOW...

BIKES ARE UP TO
50% FASTER
THAN CARS DURING
RUSH HOUR?

#422MYWAY





**VANPOOL TO WORK AND
SPEND YOUR TIME
PRODUCTIVELY!**

#422MYWAY

**REDUCE CONGESTION
& SAVE TIME BY
WORKING FROM HOME!**

#422MYWAY





COMMUTE & SOCIALIZE!

Share-A-Ride matches commuters with transit services,
carpool & vanpool groups

FOR MORE INFORMATION VISIT **422MYWAY.COM**



GET HOME FOR YOUR CHILD'S GAME!

422MYWAY.COM

CHECK OUT [422MYWAY.COM](https://422myway.com) FOR MORE
INFORMATION ON IMPROVING YOUR COMMUTE