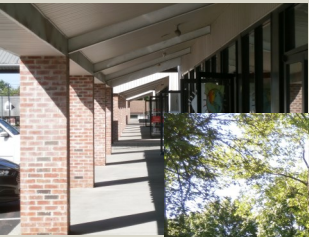


Limerick Township

Newsletter

SUPPORTING
ECONOMIC
DEVELOPMENT
AND
STRENGTHENING
JOB OPPORTUNITIES
AND SERVICES FOR
RESIDENTS



Message from the Chairman



*Kara Shuler
Chairman*

Dear Limerick Resident,

Limerick is fortunate to have a dynamic and diverse commercial business base that provides jobs and services to our growing community. This sector has experienced considerable growth over the past few decades as business owners recognize the benefits of locating within Limerick Township. With close proximity to major roadway networks, an airport, transportation facilities combined with the availability of an educated and skilled work force, it is anticipated that commercial development will continue for many years to come. Included within this newsletter are statistics on current employment and development activity from all levels of the business community including the small and family-operated businesses which are the cornerstone of the Township. Also included are projections for both the business and resident population growth through the year 2030. These facts show that the Board's focus on long-term planning must continue to be a high priority to ensure township services, and in particular police, public works and emergency services, and to provide them without an undue burden on the tax base as the commercial growth progresses.

Exemplifying the strength of the business community is the Venezia organization celebrating their 50th anniversary and recently honored by the Board for this accomplishment. Limerick Township has been their headquarters for the past 41 years as they grew their trucking and transport business into a fleet of 500 trucks that operate up and down the east coast. We thank them for being a part of the Limerick community and wish them well and many more years of future success.

As noted in the previous newsletter, the Board's focus on maintaining low real estate taxes was evident as the 2017 Budget was approved without a tax increase. Limerick's real estate taxes have remained in the lower half of all Montgomery County's 62 municipalities for many years and are a contributing factor to the commercial growth of the community. A strong and vibrant business sector not only provides jobs and services but offers a secondary benefit in helping to reduce the tax burden of our residents. The Board recognizes that a balance of residential and commercial growth must be maintained so the cost of providing township services is not placed primarily on our families and homeowners.

A focus on the needs of today with an eye on the future of this community will continue to be the Board's primary objective. Toward this effort, future newsletters will review important capital and infrastructure programs currently underway as well as those in the planning stages. All programs are in line with the Board's consistent strategy of providing the highest level of services possible in the most cost-effective manner possible-and in doing so, continue to make Limerick a great place to live, work and raise a family.

Kara Shuler
Chairman



COMMERCIAL DEVELOPMENT

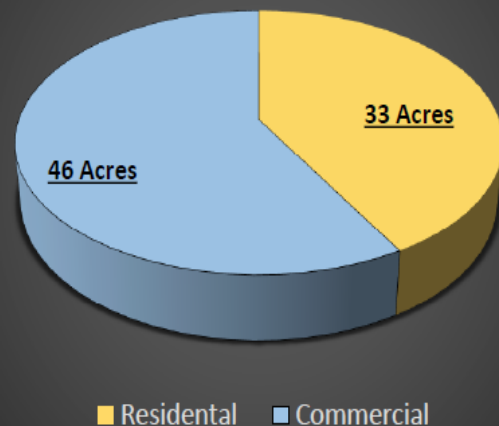
QUICK FACTS

Montgomery County Planning Commission
2016 Annual Report

In 2016, **209,714** square feet of non-residential development—approximately **8%** of all non-residential development within Montgomery County.



2016 Acreage Development



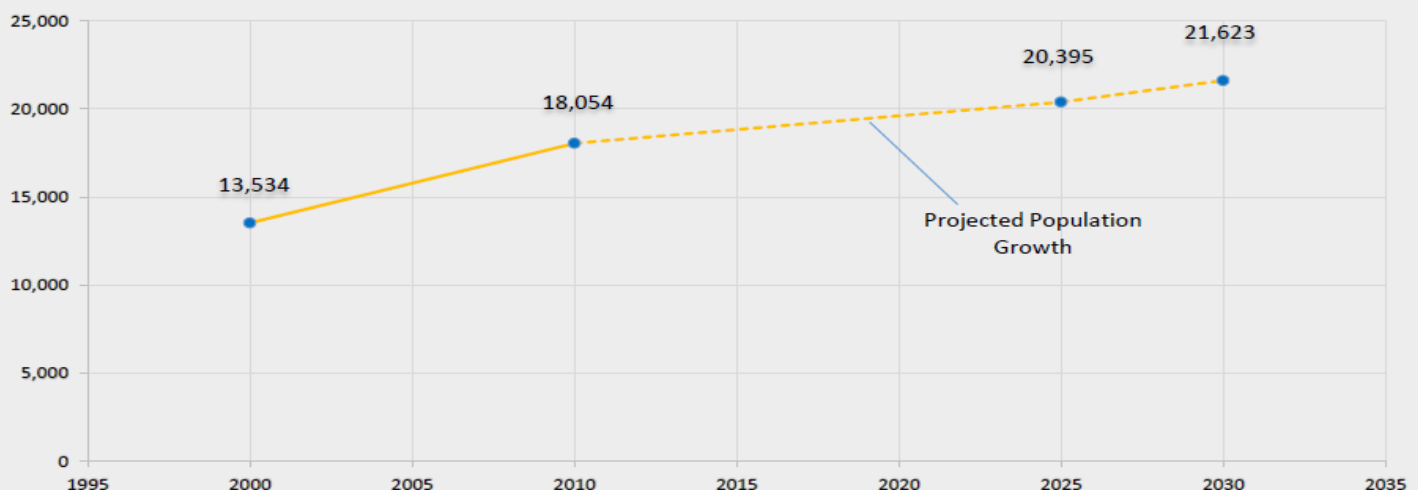
Housing Units in Limerick Township

5,442
in
2000



7,199
in
2010

Limerick Township Population



Statistics provided by the Montgomery County Planning Commission.

EMPLOYMENT NUMBERS

YEAR END 2016

14,570

Employees in Limerick Township as of December 31, 2016

The 30 Largest Businesses in the Township

Business Types	Number of Employees	Percentage
Retail	1,199	20%
Utility	921	15%
Manufacturing	798	13%
Transportation	735	12%
Professional, Scientific & Technical Services	669	11%
Recreation	406	7%
Education	403	7%
Food Service	369	6%
Wholesale	181	3%
Construction	135	2%
Healthcare	102	2%
Public Administration	<u>92</u>	<u>2%</u>
Total:	6010	100%

Small businesses, sole proprietors, and home offices in the Township with 10 employees or less, account for

1,623 jobs.



16,000

Projected number of employees in Limerick Township by 2026.

Statistics provided by Berkheimer Associates

Township News

HONORING VENEZIA TRANSPORT SERVICE, INC. ON THEIR 50th ANNIVERSARY



Left to right: Kara Shuler, Frank Venezia, Andy Venezia, and John Venezia

At the May 2nd Board of Supervisors meeting, Ms. Shuler led a presentation to honor the Venezia Organization who is celebrating its 50th anniversary. Frank, Andrew and John Venezia were in attendance to accept the Board's recognition and formal Resolution. Each offered words on the history of the company and testament to why Limerick remains their headquarters to the fleet of 500 trucks which operate up and down the East Coast.

Venezia was established in 1967 and is a family owned company being led by Frank Venezia, Andy Venezia, and John Venezia; and was founded on the principle that a trucking company should work hard to provide reliable service to their customers. The Venezia organization is driven to be the best streamlined niche carrier in the industry, which is reflected in the relationships they have built with their own people and their customers.

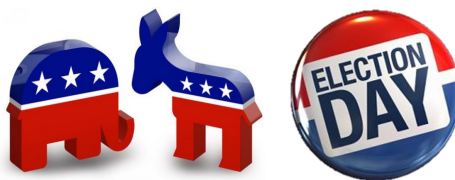
Venezia is committed to safety and strives for the highest safety standards, setting an example in their industry; and they strive to be a better-quality company in the hearts and minds of their co-workers and their families by practicing participatory, quality management and open communication, by employing qualified and skilled personnel, by investing in the future through leading edge technology, and by fostering a spirit of fairness and pride.

With Venezia locations throughout nine states, the Board of Supervisors is honored that the Venezia family has kept their Corporate Headquarters here in Limerick Township. Venezia is an important part of the Limerick Community providing employment and economic stability to the area.

Volunteer Opportunities for Upcoming Election

Limerick Township's Democratic and Republican Committees are looking for individuals interested in volunteering for the upcoming November election. Both sides of the aisle are in need of help to work polling locations. For more information on the different volunteer opportunities, including paid staffing of the polling locations, please contact the appropriate party committee.

Limerick Township
Republican Party Contact:
Thomas J. Neafcy, Jr.
thomasneafcy@comcast.net
(215) 499-7042



Limerick Township
Democratic Party Contact:
BJ Enright
Bje101@comcast.net
(610) 310-7326

Welcome New Staff

The Township is pleased to introduce three new members of the Limerick Township Staff.



Donna Hiryak, *Human Resource Manager*: Donna joined the Limerick Township staff as Human Resource Manager in February 2017. She brings with her over 15 years of experience in Human Resource and Payroll Management. Donna resides in Gilbertsville and enjoys spending time outdoors and reading.

Dawn Rykowski-Kelly, *Administrative Assistant*: Dawn recently joined Limerick Township as an administrative assistant for the Emergency Services and Planning & Zoning Departments. Dawn is an avid runner and enjoys outdoor activities, as well as spending time with her family. She is a Limerick Township Resident since 2008 and is looking forward to becoming more involved in the Township.



Jack Jeffers, *Maintenance/Custodian*: Jack started with Limerick Township in April and brings 20 plus years in facility maintenance. He is a life-long resident of Limerick Township and is an active member with Linfield Fire Company. Jack enjoys camping and spending time with his family and friends at his second home in Juniata County, PA.

Tax Collector News



Ryan Wall
Tax Collector

Schedule Your Appointment Today: Property Tax Rent Rebate Assistance

The rebate program benefits eligible Pennsylvanians age 65 and older, widows and widowers age 50 and older, and people with disabilities age 18 and older. The income limit is \$35,000 a year for homeowners and \$15,000 annually for renters, and half of Social Security income is excluded. The maximum standard rebate is \$650. If you would like to learn more about the rebate, or for assistance completing the application, please call Ryan Wall at 484-938-8001 or email limericktaxcollector@yahoo.com.

For the latest updates please follow the Tax Collector's Facebook page. The link can be found on the Tax Collector page at www.limerickpa.org.

Grand Opening Announcement

The Limerick Fire Company will soon be celebrating the official opening of our new 20,300 square foot facility, a new home for the Limerick Fire Company and Trappe Ambulance. We are inviting the public to join us in the ribbon cutting ceremony on October 21st beginning at 10am until 3pm. There will be free hotdogs, birch beer and, of course, tours of the building. Commemorative items will be available to purchase. The building was designed with a long-range plan for both current and future needs of the Township; much needed space for bunk rooms, office, study and storage are a welcomed addition to the daily operations for the services. We are hopeful you will join us to celebrate this great addition to our service and our community.



WINE BEER FOOD FEST

WBFFESTIVAL

Presented by: **Rotary**
Club of Springfield Area
Hosted by Limerick Township

Proceeds Benefit the local charities of the Springfield Rotary and the Limerick Parks and Recreation Department.

**Saturday
Sept. 23, 2017**

12-5pm Rain or Shine at
Limerick Community Park
180 Swamp Pike, Limerick

WBFFestival.com
SFRotaryClub@gmail.com

**Join Local Wineries,
Breweries, Food Trucks
& Craft Vendors**

Event Sponsor: **Signarama**
The way to grow your business.

Other Sponsorships Available

WBFFestival.com
Limited Tickets Available

EVERY TICKET PURCHASED WILL INCLUDE A WINE GLASS FOR DRINK SAMPLES FROM OUR VENDORS!

\$25 PER TICKET
Purchase online before Sept. 22nd or at the door.

100% of the Proceeds Benefit the local charities of the Springfield Rotary and the Limerick Parks and Recreation Department

See Website for List of Wineries, Breweries, Food Vendors, & Craft Vendors That have signed up already!

LIKE US ON: **facebook** **WBFFestival**

Event Sponsor: **Signarama**
The way to grow your business.

Other Sponsorships Available

Limerick

SignaramaTM

The way to grow your business.

Signarama-Limerick.com | 484.961.8802

Vehicle Wraps & Graphics | Channel Letters | Light Boxes
Vinyl Decals | Full Color Digital Graphics | Carved Signs
Interior & Exterior Signs | Wall Wraps | Canvas Frames

Parks & Recreation

Specialty Camps

Kitchen Wizards

- Sweets for Sweeties, ages 4-7
- Cooking Around the World, ages 10-14
- Cooking Around the Clock ages 7-11

Bricks 4 Kidz LEGO Camp: Ages 5-12

- Super Hero and Space
- City Planning and Amusement Parks

Art Camps

- Creative Cartooning, ages 8-13
- Theatre Camp-Imaginarium, ages 7-11
- Pre-School Art, ages 3-5

Computer Kids

- 3D Design & Printing, ages 9-14
- Beginning Robotics, ages 7-9
- Make Your Own Movie, ages 8-11

Sport Camps

- Boys Lacrosse, ages 8-13
- Cheer and Dance, ages 6-14
- Flag Football, ages 7-11

Science Explorers: Take a Dive!

- Ages 5-12
- Register at www.scienceexplorers.com

GeoVentures: Jedi Academy and Spy Training

- Ages 8-12
- Theatre Camp-Imaginarium, ages 7-11
- Pre-School Art, ages 3-5

**For a full list of dates, times, and fees,
please visit our Leisure Guide at
limerickpa.org**



Better.
Faster.
More Affordable.

1405 South Township Line Road
Limerick, PA 19468
Phone: 610-409-0400
E-mail: Limerick@cjtire.com

• • **FREE Wifi**

Complete Auto Service

One stop and you got it done!



We make car care less of a chore!

"No matter what issue or service is needed, we always feel like a valued customer who receives honest and courteous service."

-Tina

"They had me in and out in no time at all. Great service at a great price and the reliability can't be beat."

-Cathy

"CJ's has always provided outstanding service, treating me with honesty and respect."

-Donna

Mention this ad and get \$10.00 off your next purchase

Offer Code: LIMERICK017

Valid only at CJ's Limerick location. Some exclusions may apply. See store for details.



Limerick Community Day

Saturday, August 19th 4:00PM-7:00PM

Food Trucks, Vendors, & Movie in the Park to follow! The film will be Finding Dory.
Movie will start at dusk!

Rain date: Sunday, August 20th

At Limerick Community Park, home of the Manderach Memorial Playground

Look for our Business Expo brochure, available online at
www.springfordchamber.com



Discount Amusement Park Tickets

Dorney Park
Knoebel's
Dutch Wonderland
Baltimore Aquarium
Philadelphia Zoo
Hershey Park
Diggerland
Crayola
Experience



Hershey Park
Adventure Aquarium
Renaissance Faire
Six Flags Great Adventure
Elmwood Park Zoo
Morey's Pier
Franklin Institute
Sesame Place



Available at the Township
Building for a discounted price.

Please call to confirm availability and pricing.
Cash or Credit only; no refunds.

Limerick Dental Associates, LLC.

The Shoppes At Fox Ridge
5 Kugler Rd, BLDG-200, STE-110
Limerick, PA 19468
(610)495-4538



\$25

Toward any in office
service needed

Excludes combination with
any other coupons
Limit one coupon per patient

\$75

Oral Exam, X-rays,
and Cleaning

New Patients without
Insurance
Limit one coupon per patient

50% off

Take Home
Custom Whitening Kit

Limit one coupon per patient

Limerick Township
646 West Ridge Pike
Limerick, PA 19468

PRSRT STD
U.S. POSTAGE
PAID
PERMIT NO. 182
POTTSTOWN, PA
19464



Friends & Family Discount

\$35 off any

NEW SERVICE!



DIRKS
PEST MANAGEMENT SPECIALIST

CALL FOR DETAILS
610.813.2200
www.DirksPMS.com

Subject to change without notice. | Cannot be combined with other offers.



Limerick Township Temporary Municipal Building

155 S. Limerick Road, Limerick, PA 19468
610-495-6432 www.limerickpa.org

Schedule of Municipal Meetings at Temporary Building

Board of Supervisors

1st and 3rd Tuesday of each month,
7:00PM at the Township Building

Planning Commission

4th Thursday of each month,
7:00PM at the Township Building

Parks & Recreation

2nd Tuesday of each month,
7:00PM at the Township Building

Zoning Hearing Board

4th Wednesday of each month,
6:30PM at the Township Building

Board of Supervisors

Kara Shuler. -*Chairman*
Joseph St. Pedro -*Vice Chairman*
Elaine DeWan
Thomas J. Neafcy, Jr.
Kenneth W. Sperring, Jr.

