

# Limerick Township

## Newsletter

Strengthening Public Safety  
and Police Protection for our  
Community and,



No Township Tax Increase  
For 2017

## Message from the Chairman



*Kara Shuler  
Chairman*

At the Board's annual reorganizational meeting in January, I assumed the position of Chair for 2017 and in doing so, continued a long standing policy where a different Supervisor is chosen for this position on an annual basis. This policy has provided many benefits to the Township, as each Supervisor has a chance to utilize their time and talent from the leadership position, and support the Board's mission of maintaining the health, safety, and welfare of this wonderful Limerick community. As we look ahead into the future we assure those who live and work in Limerick that the planning and work of this Board, has established a solid foundation for providing vital services in the most efficient and cost effective manner possible.

Support for the public safety needs of Limerick has been a high priority for the Board. We thank Police Chief Brian Skelton for his leadership and the positive service the entire department provides to our community at a time when national issues continue to place a strain on the police profession and those who serve and protect us all. The need for the additional positions is obvious as the township continues to experience positive growth along with rising crime, traffic, domestic, and drug issues that are commonplace in every community across this nation. In 2016, the Board approved hiring five new positions, bringing the force to a total of 30 sworn officers. Three of the recently hired officers are highlighted in this newsletter. Also included is information residents should use to protect you and your families, and information to assist those within our community struggling with drug abuse issues.

As the Board discussed the cost of these new positions with the community during the 2016 annual budget meetings, new taxes were needed to cover three of the five new police positions. Additional tax revenues were anticipated for the 2017 budget year to cover the two remaining positions but due to continued strong budget management practices, **NO NEW TAXES** were imposed in 2017. The Board's commitment to the police force is also consistent with our support to all other public safety departments including the volunteer fire companies and emergency management. They all work tirelessly together to answer the call and protect all who call Limerick home.

On behalf of the entire Board of Supervisors I wish you a wonderful spring season and a prosperous 2017!!

*Kara Shuler  
Chairman*





# Township Welcomes New Officers

The Township is pleased to introduce the recent additions to the Police Force. All three were recently sworn in as full time police officers before the Board of Supervisors.

**Patrick Murphy** is a 2000 graduate of the Montgomery County Police Academy where he finished near the top of his class. He attended LaSalle University and was employed with the Plymouth Township Police Department. While there he was a field training officer and a member of the SWAT team. In our investigation of Officer Murphy, we found that friends, references and employers all spoke of his dedication to duty and life. Patrick comes to us from a full time position for Exelon Security and worked part time with Royersford Police Department. Patrick resides with his daughter Kayla in East Norriton.

**Shane Ondarza** is a 2016 graduate of the Temple University Police Academy where he graduated near the top of his class. In 2013, he earned his Bachelor's Degree from Temple University.

Shane is one of five children, all raised solely by their mother. It is her hard work and determination that has motivated him throughout life. His brother is a Philadelphia Police Officer who has guided him in reaching his goal of becoming a police officer. Shane was previously employed by Body Dynamics and he resides in Willow Grove.

**John Lachman** attended Shippensburg University where he earned a Bachelor's Degree in Human Communication Studies. He is a 2010 graduate of the Delaware County Municipal Police Academy where he finished near the top of his class. John was employed with the Delaware County Prison and West Chester University Public Safety. Since 2013 he has been employed as a civilian processing officer with the Pottstown Police Department.

In researching his background we found that all contacts spoke about his dedication, compassion for others and his great work ethic. John credits his late father for instilling him with those traits. He resides in Bryn Mawr and is an avid golfer and enjoys physical fitness.



*From left to right: Officer Ondarza, Officer Lachman, and Officer Murphy*

# Limerick Police Tips

## Burglary Prevention

Statistically, spring/summer is the time of year when burglaries occur most frequently. Burglary is defined as an act committed when a person illegally enters a building with the intent to commit a crime. Usually the burglar will sneak into a victim's home undetected while the owner is away or asleep. Burglars will steal anything of value that they can turn into "quick cash." Quick cash items include cash, jewelry, laptop computers, etc. The reason why most burglaries occur during warmer weather is because we often leave our windows and doors open to let fresh air into our homes. This makes it easy for potential burglars to enter homes to steal items that are sitting in plain view.

## Ways to Deter Potential Burglars

- ♦ Remember to close and lock your doors and windows. Screens allow easy access.
- ♦ Hide your valuables! Don't keep them in a common place. Thieves don't want to spend a lot of time in a house. What they can't find they can't steal.
- ♦ Document your valuables through pictures, serial numbers, etc.
- ♦ Don't let your newspapers pile up at the end of the driveway. To a criminal it says, "We're not home."
- ♦ Lock your car doors. Most cars contain some good things to steal, not to mention your garage door remote which a thief might use for a return visit.
- ♦ Cut your bushes back and use some outdoor lighting with motion sensors.
- ♦ Write down license plate numbers and remember descriptions of cars that are strange to your neighborhood.
- ♦ Be suspicious of people you do not know. Thieves come in all ages, sizes and colors. There are professional thieves out there that will distract you at the front door while someone else sneaks in the rear door to commit a crime.
- ♦ Talk to your neighbors. Find out what's going on.

## Ways to Protect Yourself from Identity Theft

- ♦ Diligently protect your information. Secure your credit cards, personal information and bank account information.
- ♦ Do not carry more information than what you need. Limit the number of credit cards you carry. Do not carry your checkbook or an extra check if you do not need it.
- ♦ Be aware of your surroundings in public.
- ♦ Annually request a credit report from each of the three credit bureaus. Check each report closely for errors and report them immediately.
- ♦ Keep a list of account numbers and contact numbers for your various credit companies in a secured area of your home.
- ♦ Shred all account statements prior to disposing of them in your trash.

If you think something is suspicious CALL US!!! Our goal is to make it harder for thieves to steal from our community - to do this, we need your help. Call us when something seems strange, out of place, or just doesn't make sense. Your call reporting a suspicious vehicle and/or person could be the one that we need.

For immediate problems contact County Non-Emergency 610-489-6262 For Limerick Township Police Department 610-495-7909. Remember to call 911 for emergencies.



# Public Service Information

## National Drug Crisis

Today all communities are facing an epidemic involving opioid and heroin abuse.

**Limerick has experienced a 46.6% increase in opioid and heroin related overdoses.**

Quickly responding to an overdose with the lifesaving reversal drug Naloxone is critical. Limerick was one of the first communities to carry this lifesaving drug Naloxone in every patrol car, and today all police departments in Montgomery County are now doing the same. Naloxone works to counteract opioid drugs. This does not solve the problem but it does save lives in the hopes to giving those a second chance at recovery.

### **What You Should Do?**

- ♦ If someone you care about has asked for help, he or she has taken an important first step. You can always take steps to locate an appropriate physician or health professional, and leave the information with your friend or loved one. You can call health professionals in advance to see if they are comfortable speaking with their patients about addiction. If not, ask for a referral to another doctor with more expertise in the area of addiction.
- ♦ Emphasize to your friend or loved one that it takes a lot of courage to seek help for a drug problem because there is a lot of hard work ahead. There is a great deal of scientific evidence that treatment works, and people recover every day. Assure your friend or loved one that you will be supportive in his or her courageous effort.
- ♦ You can also reassure your friend that laws protect the privacy of a person seeking drug treatment—or in fact, any medical treatment. Health care providers may not share information with anyone else without a patient's permission.

**Individuals in Limerick Township needing Drug and Alcohol services should contact the local office of the Montgomery County Drug and Alcohol Programs at Creative Health Services 11 Robinson Street Pottstown, Pa.19464—610-327-1503**

### **Limerick Police Prescription Drug Disposal Program**



Prescription Drug Disposal Program provides a safe way for Township residents to dispose of unwanted, unneeded and expired prescription and over-the-counter medications. In addition to decreasing the circulating drug supply, the program also helps keep our water supply safe.

**Accepted Medicines/Items:** Prescription tablets and capsules, over-the-counter tablets and capsules, creams and ointments, and pet medications.

*Note: Prescription medicines can be in their original prescription bottles with the label removed (or the name blacked out) or can be placed in plastic bags.*

## Yard Waste and Recycling Information

### Limerick Township Yard & Leaf Collection Options

	<p><b>Township Drop Off Site</b> 180 Swamp Pike Royersford, PA 19468</p> <ul style="list-style-type: none"> <li>• First Monday of each month 8:00 AM – Noon</li> <li>• Leaves and small sticks, does not accept grass clippings</li> </ul>
	<p><b>Hetrick Gardens</b> 2620 Swamp Pike Pottstown, PA 19464</p> <ul style="list-style-type: none"> <li>• No Charge to Limerick Residents (Residential only)</li> <li>• Accepts Most Types of Yard Waste, from grass clippings to tree limbs and small stumps</li> </ul>
	<p><b>Private Haulers</b></p> <ul style="list-style-type: none"> <li>• Curbside pickup from your privately contracted trash hauler</li> <li>• Each hauler is required by Limerick to pick up 4 times a year</li> </ul>

All collection dates and operating hours are listed in detail at [www.limerickpa.org](http://www.limerickpa.org) under Public Works> Yard & Leaf Waste



### Limerick Township Participates in the Montgomery County Specialty Waste Collection Programs



**Be sure to check out the County's Recycling Guide:  
Recycling Items from A-Z (including Electronic)**  
You may also visit [Earth911.com](http://Earth911.com)  
for additional information on where to recycle



All County Recycling Program Information can be found at  
[www.montcopa.org/637/Recycling-Information](http://www.montcopa.org/637/Recycling-Information)

## Community News



Ryan Wall  
Tax Collector

### Schedule Your Appointment Today: Property Tax Rent Rebate Assistance

Now that income tax season is upon us, many residents have questions regarding the Property Tax Rent Rebate.

The rebate program benefits eligible Pennsylvanians age 65 and older; widows and widowers age 50 and older, and people with disabilities age 18 and older. The income limit is \$35,000 a year for homeowners and \$15,000 annually for renters, and half of Social Security income is excluded. The maximum standard rebate is \$650. If you would like to learn more about the rebate, or for assistance completing the 2016 application, please call Ryan Wall at 484-938-8001 or email [limericktaxcollector@yahoo.com](mailto:limericktaxcollector@yahoo.com).

## Important Community Update

In 2016, the Spotted Lanternfly has been discovered within Limerick Township and Limerick has been added to the quarantine area. As residents begin their spring clean up and spending more time outdoors it is very important to check your property for Spotted Lanternfly eggs. Please review the chart below for important clues to look for when you are in your yard. With your assistance we can stop the spread of the Spotted Lanternfly.

#### What is a Spotted Lanternfly?

Is an invasive plant hopper, that is a new threat to Pennsylvania and the United States. The Spotted Lanternfly attacks many hosts including the Tree of Heaven, grape vines, apples, stone fruits, and pine trees.

#### Life Cycle

October-November: Begin laying eggs  
Late April-Early May: Eggs begin to hatch  
Early May-July: Immature Stage  
July-December: Reach adulthood

#### What to Look For?

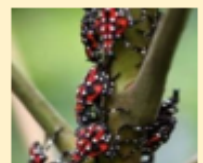
-Spotted Lanternflies will lay eggs on any smooth surface of any tree or around trees. Eggs have been found under flat rocks and have preferred rusted metal.



October-April



Late April-  
Early May



Mid May-July



#### What to do when you find a Spotted Lanternfly?

-If you find a Spotted Lanternfly in a municipality where it is known to exist you should try and kill it. This insect is considered a threat to crops and many people are working to try to prevent it from spreading.

-Each female will lay up to 100 eggs or more in the fall, so by destroying even one female, you are reducing the potential population for the future. If egg mass is found, please scrap downward into a container or Ziploc bag containing hand sanitizer.

#### Prevention of Spreading

-Inspect trees with smooth bark, the area around the trees, fallen branches, and yard waste.

-Other areas to inspect include rusted metal surfaces, boats, ATV's, sheds, play equipment outside, and cars parked under a Tree of Heaven or pines.

-Treat the Tree of Heaven with a herbicide. *Please follow the directions to prevent harm to neighboring plants.*

-Most importantly be vigilant. Having help from the community by identifying and scrapping egg masses or killing immature and mature Spotted Lanternflies will help protect future spread.

### For More Information

Please visit the Pennsylvania's Department of Agriculture website or pick up informational handouts at the Limerick Township Building.



## Community News

### Limerick Fire Company Events

**May 10-14** Annual Carnival

**June 20-24** Kids Fire Fighter  
Camp 9:00AM-Noon, ages 6-13



*Visit us online for more information:*

[www.limerickfirerescue.org](http://www.limerickfirerescue.org)

### Linfield Fire Company Events

**April 13,14,15** Easter Flower Sale

**April 15** Easter Egg Hunt

**May 6** Basket Bingo

**May 14** Mother's Day Breakfast

**June 3** Chinese Auction



*Visit us online for more information:*

[www.linfieldfire.com](http://www.linfieldfire.com)

### Limerick Historical Society Events

**April 10 , 7:30PM-“Presentation by Greg Gubler,PhD., Society Member”**

Dr. Gubler will discuss his birthplace in Idaho, his service in the US Marine Corps, and his career that included moves to Nevada, Utah, Japan, Hawaii and many other states before moving to PA in 1982. Prior to retirement in 2005, he was a professor of history and university archivist.

**May 8, 7:30PM-“Presentation by Danny Almeida, Society Member”**

Danny will present a photographic journey to London, where he recently visited.

**June 12, 6:30PM-Society Members Will Tour an Historic Home in Limerick Township.**

If your want to join society members on the tour please contact us at 610-495-5229.

### Potassium Iodine Tablet Distribution Update

Residents who possess Potassium Iodine (KI) pills with 2015 expiration dates need to obtain replacement tablets. KI tablets can also be picked up daily, Monday-Friday, 8:00am to 4:00pm, at the Pottstown Health Center, 364 King Street, Pottstown, PA. Residents can also call Pottstown Health Center's phone number (610-970-5040) anytime of the year to inquire about the KI Tablets.

## Reminder We Moved!

**Limerick Township Police, Administration, and Tax Collection has relocated to our temporary facility:**

**155 S. Limerick Road, Limerick, PA 19468**

#### Police & Administration

##### **UPS & FedEx Deliveries**

155 S. Limerick Road  
Limerick, PA 19468

##### **USPS Mailings**

646 W. Ridge Pike  
Limerick, PA 19468



Main Entrance at  
155 S. Limerick Road

#### Tax Collector

##### **UPS & FedEx Deliveries**

155 S. Limerick Road  
Limerick, PA 19468

##### **USPS Mailings**

Ryan Wall, Tax Collector  
PO Box 460  
Royersford, PA 19468



# Summer Camps

Limerick Township Parks and Recreation will be offering half and full day specialty camps to keep your children having fun all Summer long!

## June Camps

- Kitchen Wizards: Sweets for Sweeties
- Magic Camp
- Bricks 4 Kidz: Super Hero and Space LEGO Camp

## July Camps

- Flag Football Camp
- Cheer and Dance Camp
- Kitchen Wizards: Cooking Around the World
- Beginning Robotics-Firetrucks, Space Vehicles & More!
- Make Your Own Movie
- Creative Cartooning

## August Camps

- Kitchen Wizards: Cooking Around the Clock
- Science Explorers: Take a Dive!
- Bricks 4 Kidz: City Planner and World of Amusement LEGO Camp
- GeoVentures: Jedi Academy and Spy Training
- The Amazing World of 3-D Printing
- Theatre Camp: Imaginarium

Please visit the Parks and Recreation Page at [www.limerickpa.org](http://www.limerickpa.org) or the Parks and Recreation's Facebook page for more information about these camps listed and any new camps scheduled for the 2017 Summer!



Check out Jump Start Sports, 6 week Shamrock Sports, and Junior Shamrock camps! Visit [www.JumpStartSports.com](http://www.JumpStartSports.com) for more information and to register for this camp.

## New York City Bus Trip

On May 13, spend the day taking in the sights and sounds of New York City! Bus leaves Limerick Township at 8AM and will return at around 9PM.

*Register by May 5th.*

**Fee:** \$45 per person

## We Now Offer Online Registration

Limerick Township Parks and Recreation now offers online registration for camps and certain events and programs! All online registrations must be paid by credit card. MasterCard, Discover & Visa will be accepted. A third-party convenience fee of 2.75% will apply to cardholders who wish to register online.

We will still accept Walk-ins and Mail-in paper registrations for camps, programs, and events.

To visit our online registration page, please visit <https://limerickpa.recdesk.com/Community/Home>



## **Community Yard Sale**

*Saturday, April 29, 7:00AM-12:00PM*

*Limerick Community Park*

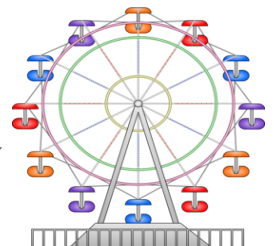
*\$10.00 /space, must pre-register*

## **Discount Amusement Park Tickets**

Dorney Park  
Knoebel's  
Dutch Wonderland  
Philadelphia Zoo  
Hershey Park  
Diggerland USA  
Crayola Experience  
Baltimore Aquarium

Hershey Park  
Adventure Aquarium  
Renaissance Faire  
Six Flags Great Adventure  
Elmwood Park Zoo  
Morey's Pier  
Sesame Place  
Medieval Time

Available at the Township Building for a discounted price. Please call to confirm availability and pricing. Cash or Credit only, no refunds.



Limerick Township  
646 West Ridge Pike  
Limerick, PA 19468

PRSR STD  
U.S. POSTAGE  
**PAID**  
PERMIT NO. 182  
POTTSTOWN, PA  
19464



**PEST CONTROL**  
**\$35 off any**  
**NEW SERVICE!**  
**DIRKS** PEST MANAGEMENT SPECIALIST  
CALL FOR DETAILS  
**610.813.2200**  
[www.DirksPMS.com](http://www.DirksPMS.com)  
Subject to change without notice. | Cannot be combined with other offers.



**Limerick Township Temporary Municipal Building**

155 S. Limerick Road, Limerick, PA 19468  
610-495-6432      [www.limerickpa.org](http://www.limerickpa.org)

**Schedule of Municipal Meetings at Temporary Building**

**Board of Supervisors**

1st and 3rd Tuesday of each month,  
7:00PM at the Township Building

**Planning Commission**

4th Thursday of each month,  
7:00PM at the Township Building

**Parks & Recreation**

2nd Tuesday of each month,  
7:00PM at the Township Building

**Zoning Hearing Board**

4th Wednesday of each month,  
6:30PM at the Township Building

**Board of Supervisors**

Kara Shuler. -*Chairman*  
Joseph St. Pedro -*Vice Chairman*  
Elaine DeWan  
Thomas J. Neafcy, Jr.  
Kenneth W. Sperring, Jr.

