

Limerick Township Leaf & Yard Waste Collection Options

Limerick
TOWNSHIP



Township Drop Off Site

*Jan. thru Oct. at Community Park
Nov. & Dec. at Public Works Building*

Hetrick Gardens

2620 Swamp Pike
Pottstown, PA 19464

Private Haulers

- First Monday of each month
8:00 AM – Noon
- Leaves and small sticks, does ***not*** accept grass clippings
- No Charge to Limerick Residents (Residential only)
- Accepts Most Types of Yard Waste, from grass clippings to tree limbs and small stumps
- Curbside pickup from your privately contracted trash hauler
- Each hauler is required by Limerick to pick up 4 times a year



Trash &
Recycling
Service

A.J. Blosenski, Inc.
www.ajblosenski.com
610.942.2707



UNIQUE WASTE SOLUTIONS

the innovative recycling lead



J.P. MASCARO & SONS

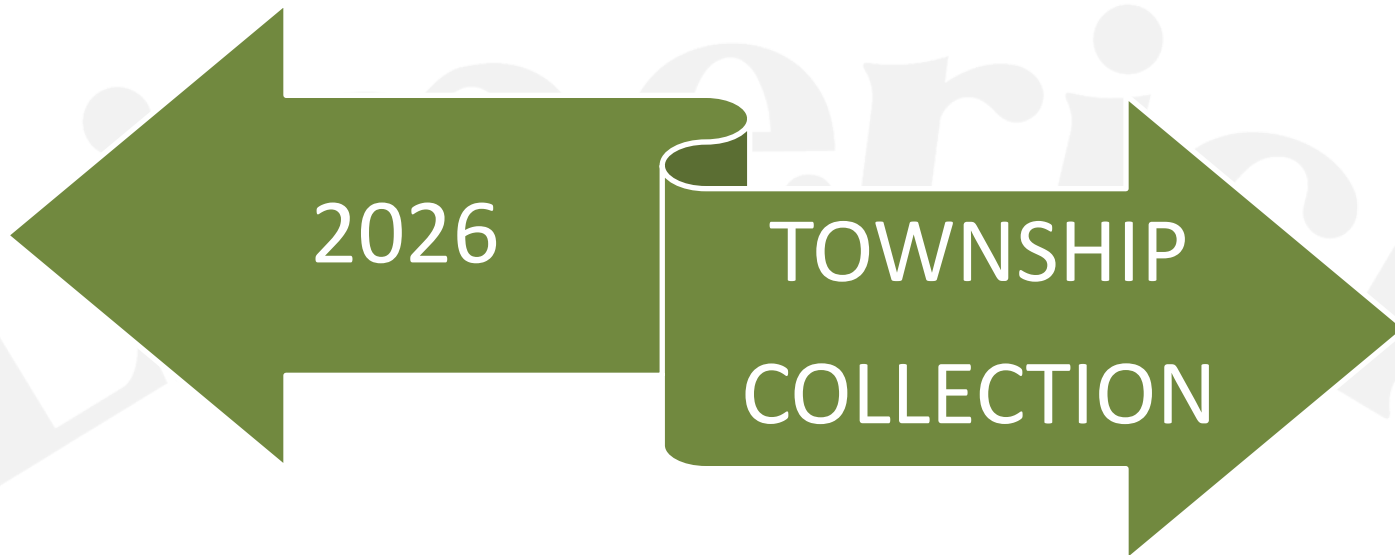


B GONE



"SERVICE FIRST"





Leaf & Yard Waste - Township Drop-Off Collection Dates and Locations:

The following Mondays at Limerick Community Park between 8:00 A.M. to 12:00 Noon:

January 5	March 2	May 4	July 6	September 14
February 2	April 6	June 1	August 3	October 5

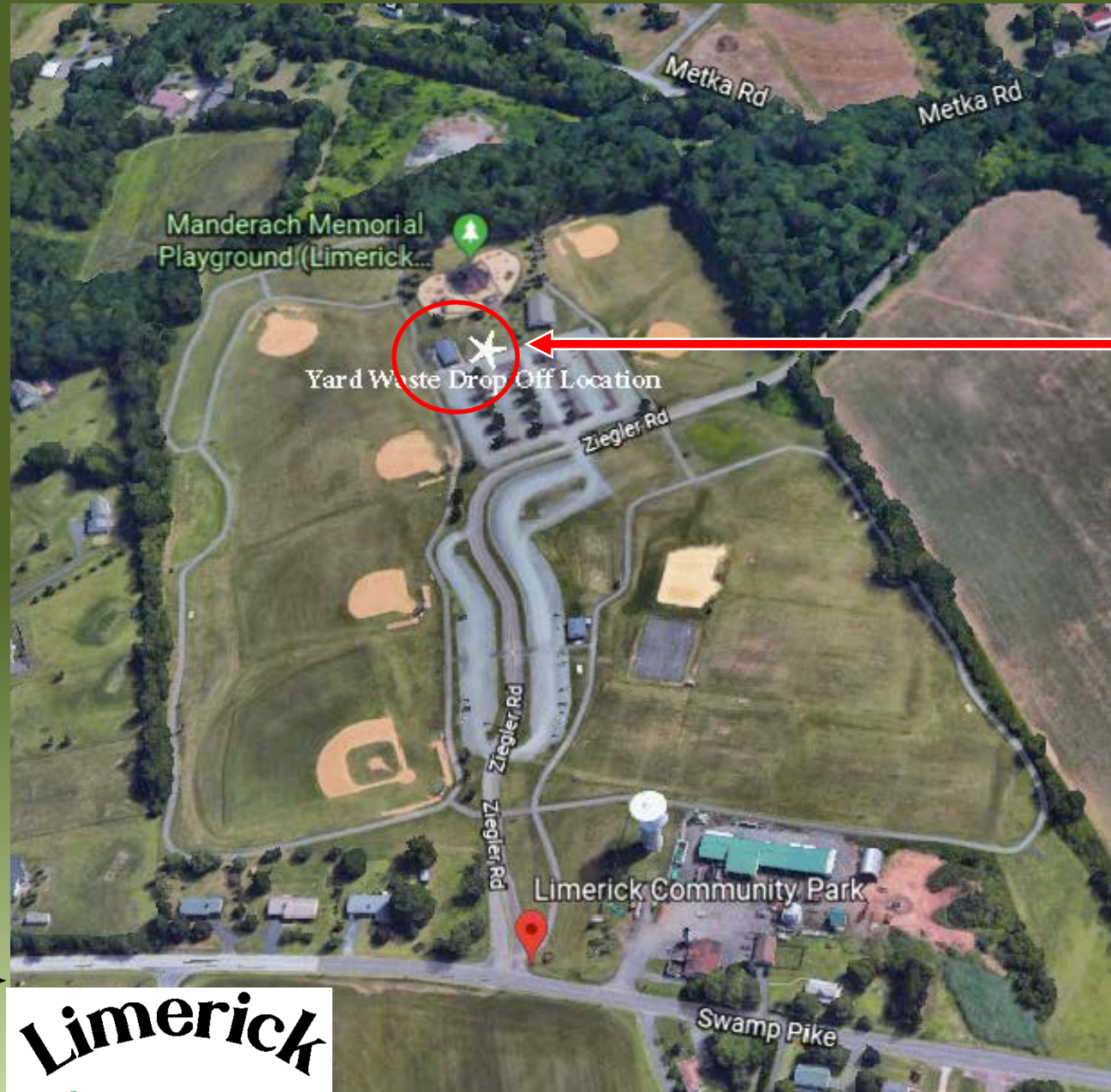
The following Mondays at Limerick Public Works Facility between 8:00 A.M. to 12:00 Noon:

November 2	December 7
------------	------------

Leaf & Yard Waste Drop Off Location at Limerick Community Park

**Only on the Posted
Township Leaf &
Yard Waste
Collection Dates**

**January –
October**



**Limerick
TOWNSHIP**

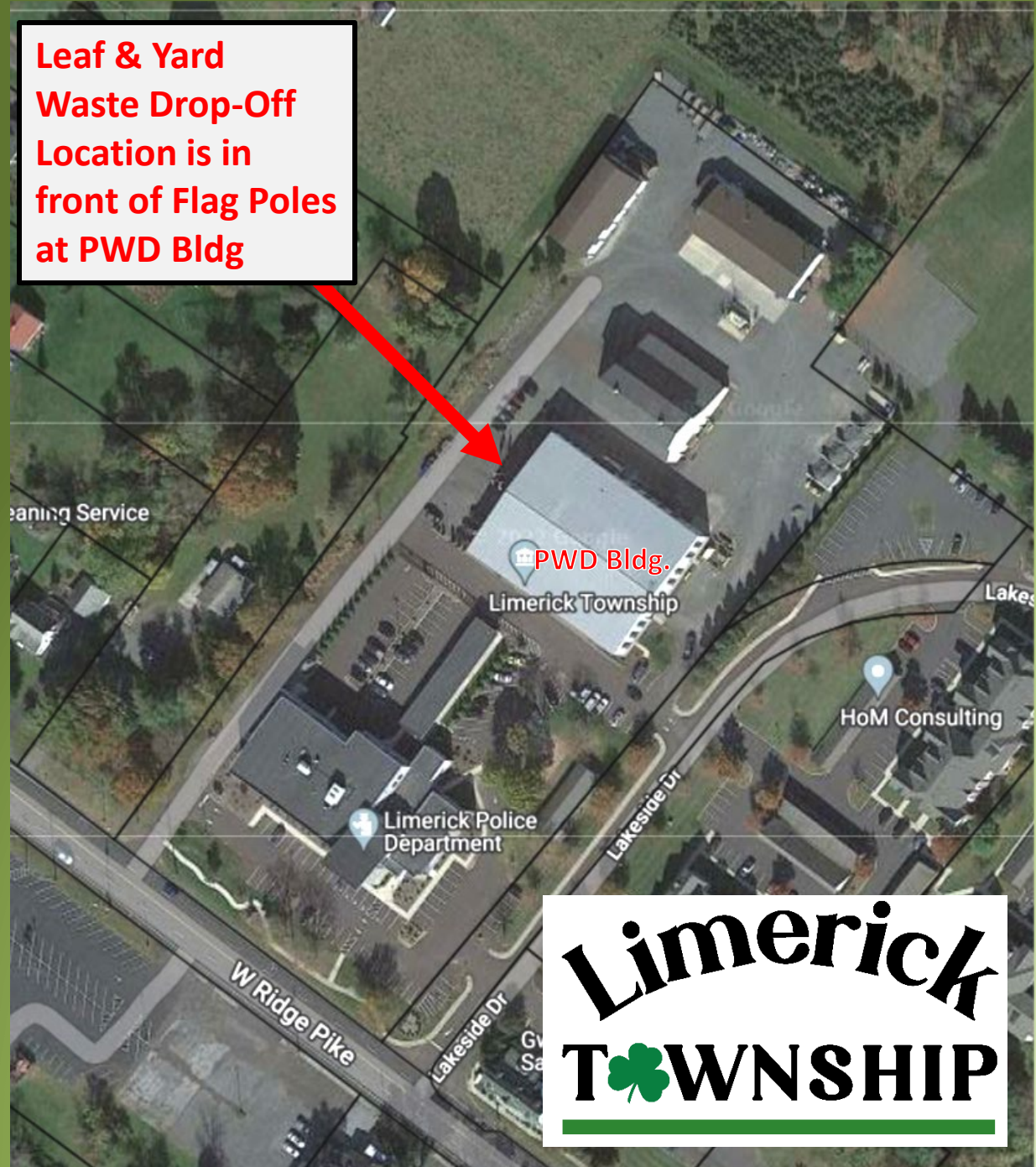
Leaf & Yard Waste Drop Off Location at the Public Works Facility

646 W. Ridge Pike

**Only on the Posted
Township Leaf &
Yard Waste
Collection Dates**

**November &
December**

**Leaf & Yard
Waste Drop-Off
Location is in
front of Flag Poles
at PWD Bldg**



Yard Waste Compost Facility

Limerick Township Residents

Hetrick Gardens Landscape & Nursery Center

Operated by M. Hetrick Enterprises, LLC

2620 Swamp Pike, Pottstown, New Hanover Township, Montgomery County, PA 19464

Office: 610-327-9066

Yard Waste Accepted *(at no charge for Limerick Township residents, and ONLY during designated times):*

Leaves, Brush, Tree Limbs, Stumps (12" diameter max), Lawn Clippings, Christmas Trees, Fire Wood

CALL FOR SEASONAL HOURS OF OPERATION

Drop Off Policy:

- Identification must be presented upon each visit to verify residency in Limerick Township.
- Non-residents and contractors will be charged a dump fee determined by site operator
- All loads will be inspected by site operator before dumping.
- All loads must be separated and dumped in designated areas.
- Any trash, debris, construction materials, contaminated materials, or other items deemed undesirable by the site operator will not be accepted.
- Any unacceptable items found mixed within the loads must be removed by the resident or a clean-up fee determined by the site operator will be assessed on the resident.

Upon Each Visit:

- Residents must provide the following information before being permitted to dump off their yard waste: Name, Street Address, Phone Number, Quantity/Type/Source of material.
- Resident's signature will be required to acknowledge and accept this policy.
- Hetrick Gardens reserves the right to refuse the dumping of any materials as outlined above, ban a resident from use of the facility as a result of non-compliance of this policy, and hold violators accountable for prosecution to the fullest extent of the law.

I have read, accept, and agree to this policy as listed above.

Signature _____ Date _____

Print Name _____

Street Address _____

Phone # _____

Information for all Private Hauling Companies operating in Limerick Township

Per Limerick Township Ordinance No. 288 adopted on December 13, 2007 by the Board of Supervisors, the Township is again requesting information as to your schedule for collection of yard and leaf waste. Per Resolution No. 2007-45 which accompanies Ordinance No. 288, residential trash haulers are required to advise their customers of specific dates for leaf pick-up, which will be:

- ☐ **First collection in May**
- ☐ **Second collection in late October**
- ☐ **Third collection in November**
- ☐ **Fourth collection in December**

Limerick Township is obligated to post this information; we are advising you that a copy of this information must be forwarded to the Township each year prior to the May collections. Please forward to the attention of Marcy Mancini at MMancini@LimerickPA.org

Copies of Ordinance No. 288 and Resolution 2007-45 are included on our Website for your convenience.

Information for all Private Hauling Companies operating in Limerick Township

Limerick Township Board of Supervisors passed the enclosed Ordinance No. 377 on April 18, 2017.

This Ordinance amended the hours of operation for municipal waste collectors or haulers to:

- ☐ **7:00 A.M. to 8:00 P.M. Monday through Friday**
- ☐ **8:00 A.M. to 6:00 P.M. on Saturday and Sunday**

Any collections, as referenced above, performed outside of these hours will be considered a violation. The Limerick Township Police Department will be enforcing these measures.

Copies of Ordinance No. 377 are included on our Website for your convenience.

Private Trash Haulers within Limerick Township



For Leaf & Yard Waste Collection Dates use the following link:

<http://www.limerickpa.org/332/Recycling-Information>

LIMERICK TOWNSHIP LEAF COLLECTION **2026 DATES:**

A.J. Blossenski, Inc.'s Yard Waste Collection Policy:

Simply bag or bundle your yard debris, we accept five (5) items at EACH pick-up.

We require grass clippings and leaves to be placed in bags that are less than 20lbs each. Twigs and branches can be bundled, less than 3 feet.

** No stones or dirt permitted.*



<https://www.ajblossenski.com/>

(610) 942-2707

1-800-343-6583

P.O. Box 392

Elverson, PA 19520

LIMERICK TOWNSHIP LEAF COLLECTION 2026 DATES:

MAY __, 2026

OCTOBER __, 2026

NOVEMBER __, 2026

DECEMBER __, 2026



(484) 768-0399

<https://bgonewaste.com/>

Serving Berks, Montgomery, Lebanon, Delaware, Chester, Schuylkill, and Lehigh Counties

LIMERICK TOWNSHIP LEAF COLLECTION 2026 DATES:

MAY __, 2026

OCTOBER __, 2026

NOVEMBER __, 2026

DECEMBER __, 2026

Leaf pick up is also done on your normal trash pick up days – must be in brown paper yard waste bags.



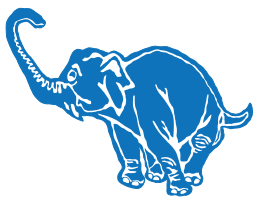
LIMERICK TOWNSHIP LEAF COLLECTION 2026 DATES:

MAY __, 2026

OCTOBER __, 2026

NOVEMBER __, 2026

DECEMBER __, 2026



J. P. Mascaro & Sons

If it's service, it's us!

1-888-MASCARO (1-888-627-2276)

<https://www.jpмассaro.com/>

LIMERICK TOWNSHIP LEAF COLLECTION 2026 DATES:

MAY __, 2026

OCTOBER __, 2026

NOVEMBER __, 2026

DECEMBER __, 2026



SORELLE

Disposal

610-332-8600

LIMERICK TOWNSHIP LEAF COLLECTION

2026 DATES:

MAY __, 2026

OCTOBER __, 2026

NOVEMBER __, 2026

DECEMBER __, 2026



UNIQUE WASTE SOLUTIONS

the innovative recycling lead

Unique Waste Solutions

P.O. Box 281

Pottstown PA 19464

O: 484-949-1923

www.uniquewastesolutions.com

LIMERICK TOWNSHIP LEAF COLLECTION 2026 DATES:

MAY 21, 2026

OCTOBER 08, 2026

NOVEMBER 12, 2026

DECEMBER 10, 2026



wm.com

(800) 869-5566

**197 Swamp Creek Road
Gilbertsville, PA 19525
(610) 367-1300**

LIMERICK TOWNSHIP LEAF COLLECTION 2026 DATES:

MAY **9**, 2026

OCTOBER **10**, 2026

NOVEMBER **7**, 2026

DECEMBER **12**, 2026

All Yard Waste **Must Be Scheduled by 3:00 P.M. the Day BEFORE**

the above Scheduled Pickup Dates

Up to 10 Biodegradable Bags per Collection



WhitetailDisposal

334 Layfield Road

Perkiomenville, PA 18074

Phone: (610) 754-0103

www.WhitetailDisposal.com

Residential Recycling – Township Code §149-18

Leaf waste. All residents of Limerick Township shall separate leaf waste from all municipal waste generated at their property. When collection procedures have been scheduled by the municipal waste collector, leaf waste shall be placed in paper biodegradable bags provided by the municipal waste collector. Residents must purchase biodegradable leaf and yard waste collection bags from an authorized dealer as no plastic bags are permitted.

Any resident who otherwise provides for the proper disposal of leaf waste by composting shall not be required to comply with the provisions of this subsection.

Residential Recycling – Township Code §149-18

Recyclable materials. All residents of Limerick Township shall separate recyclable materials from all municipal waste generated at their properties. When placed at the curb for collection in accordance with the provisions of this article, recyclable materials shall be placed in separate, reusable containers which clearly identify the contents as recyclables.

The preparation for collection of municipal waste and recyclable materials shall be made in accordance with the instructions provided by the municipal waste collector.

Commercial, Institutional, and Municipal Recycling – Township Code §149-19

All persons occupying commercial, institutional, and municipal establishments within Limerick Township shall separate high-grade office paper, corrugated paper, bulk and leaf waste and all recyclable materials and such other materials as may be changed from time to time by resolution of the Board of Supervisors of Limerick Township generated at such establishments and from community activities, store the materials until collection by a municipal waste collector and annually provide written documentation and certification to Limerick Township of that total volume of materials and the type of materials recycled. *Such persons may comply with the reporting requirements hereunder by requiring their municipal waste collector to provide said documentation and certification directly to the Township.*